

**TM 11-4940-477-24P**

---

**TECHNICAL MANUAL**

**ORGANIZATIONAL, DIRECT SUPPORT AND GENERAL SUPPORT MAINTENANCE  
REPAIR PARTS AND SPECIAL TOOLS LIST  
(INCLUDING DEPOT MAINTENANCE REPAIR PARTS AND SPECIAL TOOLS)  
FOR  
SHOP EQUIPMENT, BATTERY SERVICING,  
SHELTER MOUNTED AN/TSM-133  
(NSN 4940-01-052-3773)**

---

**HEADQUARTERS, DEPARTMENT OF THE ARMY  
14 MAY 1984**



**ORGANIZATIONAL, DIRECT SUPPORT AND GENERAL SUPPORT MAINTENANCE  
 REPAIR PARTS AND SPECIAL TOOLS LISTS  
 (INCLUDING DEPOT MAINTENANCE REPAIR PARTS AND SPECIAL TOOLS)  
 FOR  
 SHOP EQUIPMENT, BATTERY SERVICING,  
 SHELTER MOUNTED AN/TSM 33  
 (NSN 4940-01-052-3773)  
 Current as of 1 March 1984**

**Table of Contents**

	<b>Page</b>	<b>Illus Figure</b>
Section I. Introduction .....	1	
II. Repair Parts List.....	5	
Group 00 Shop Equipment, Battery Servicing, Shelter Mounted, AN/TSM-133 . . . .	5	1
01 Electrical installation .....	11	2
0101 Raceway Installation .....	13	3
010101 Frames Installation (No Parts Authorized)		
01010101 Roadside Panel Installation (No Parts Authorized)		
010102 Panel Assembly, Power Entry .....	15	4
010103 Panel Main Distribution .....	17	5
010104 Distribution Panel .....	19	6
0102 Lamp Installation, Fluorescent .....	21	7
0103 Lamp Assembly, Incandescent .....	23	8
02 Plumbing Installation .....	25	9
0201 Pump Assembly, Water .....	27	10
03 Compressor Unit, Dia.....	29	11
04 Dolly Assembly, Battery .....	31	12
05 Light Assembly, Emergency.....	33	13
0501 Light Emergency .....	35	14
06 Charger Assembly, Battery .....	37	15
0601 Panel Assembly, Air Conditioning .....	39	16
07 Bracket Assembly, Ladder .....	41	17
08 Cable Assembly, Air Conditioning .....	43	18
09 Hose Assembly, Water .....	45	19
10 Telephone Set TA-312 (See TM 11-5805-201-20P and TM 11-5805-201-34P for Parts)		
11 Multimeter AN/PSM-45 (See TM 11-6625-3052-24P for Parts)		
12 Air Conditioner (See TM 5-4120-352-24P for Parts)		
13 Ground Rod Assembly (No Parts Authorized)		
14 Holder Assembly, Hammer .....	47	20
15 Telephone Holder (No Parts Authorized)		
16 Electric Heater (See Operator and Service Manual for Parts)		
17 Cable Assembly, Power Electrical .....	49	21
18 Cable Assembly, Power Electrical .....	51	22
19 Tester Installation, Vent Battery .....	53	23
20 Battery Vent Tester (NO Parts Authorized)		
21 Battery Charger AN/USM-432 (See TM 11-6130-413-24P)		
22 Duct Installation, Air .....	55	24
Section III. Special Tools List (Not Applicable)		
IV. National Stock Number and Part Number Index.....	56	

**REPORTING ERRORS AND RECOMMENDING IMPROVEMENTS**

You can help improve this manual. If you find any mistakes or if you know of a way to improve the procedures, please let us know. Mail your letter or DA Form 2028 (Recommended Changes to Publications and Blank Forms) direct to: Commander, US Army Communications-Electronics Command and Fort Monmouth, ATTN: DRSEL-ME-MP, Fort Monmouth, NJ 07703.

In either case, a reply will be furnished direct to you.

## SECTION I

## INTRODUCTION

**1. Scope**

This manual lists spares and repair parts; special tools; special test, measurement, and diagnostic equipment (TMDE), and other special support equipment required for performance of organizational, direct support, and general support maintenance of the AN/TSM-133. It authorizes the requisitioning and issue of spares and repair parts as indicated by the source and maintenance codes.

**2. General**

This Repair Parts and Special Tools List is divided into the following sections:

*a. Section II. Repair Parts List.* A list of spares and repair parts authorized for use in the performance of maintenance. The list also includes parts which must be removed for replacement of the authorized parts. Parts lists are composed of functional groups in numeric sequence, with the parts in each group listed in figure and item number sequence.

*b. Section III. Special Tools List.* Not applicable.

*c. Section IV. National Stock Number and Part Number Index.* A list, in National item identification number (NIIN) sequence, of all National stock numbers (NSN) appearing in the listings, followed by a list, in alphameric sequence, of all part numbers appearing in the listings. National stock numbers and part numbers are cross-referenced to each illustration figure and item number appearance.

**3. Explanation of Columns**

*a. Illustration* This column is divided as follows;

(1) *Figure number.* Indicates the figure number of the illustration on which the item is shown.

(2) *Item number.* The number used to identify item called out in the illustration.

*b. Source, Maintenance, and Recoverability (SMR) Codes.*

(1) *Source code.* Source codes indicate the manner of acquiring support items for maintenance, repair, or overhaul of end items. Source codes are entered in the first and second positions of the Uniform SMR Code format as follows:

<i>Code</i>	<i>Definition</i>
-------------	-------------------

PA	— Item procured and stocked for anticipated or known usage.
----	---

- |    |   |
|----|---|
| PB | — Item procured and stocked for insurance purpose because essentiality dictates that a minimum quantity be available in the supply system.  |
| PC | — Item procured and stocked and which otherwise would be coded PA except that it is deteriorative in nature.  |
| PD | — Support item, excluding support equipment, procured for initial issue or outfitting and stocked only for subsequent or additional initial issues or outfittings. Not subject to automatic replenishment.  |
| PE | — Support equipment procured and stocked for initial issue or outfitting to specified maintenance repair activities.  |
| PF | — Support equipment which will not be stocked but which will be centrally procured on demand.   |
| PG | — Item procured and stocked to provide for sustained support for the life of the equipment. It is applied to an item peculiar to the equipment which, because of probable discontinuance or shutdown of production facilities, would prove uneconomical to reproduce at a later time. |
| KD | — An item of a depot overhaul/repair kit and not purchased separately. Depot kit defined as a kit that provides items required at the time of overhaul or repair.   |
| KF | — An item of a maintenance kit and not purchased separately. Maintenance kit defined as a kit that provides an item that can be replaced at organizational or intermediate levels of maintenance.   |
| KB | — Item included in both a depot overhaul/repair kit and a maintenance kit.  |
| MO | — Item to be manufactured or fabricated at organizational level.  |
| MF | — Item to be manufactured or fabricated at the direct support maintenance level.  |
| MH | — Item to be manufactured or fabricated at the general support maintenance level.   |
| MD | — Item to be manufactured or fabricated at the depot maintenance level.   |
| AO | — Item to be assembled at organizational level.   |

<i>code</i>	<i>Definition</i>
A F	— Item to be assembled at direct support maintenance level.
AH	— Item to be assembled at general support maintenance level.
A D	— Item to be assembled at depot maintenance level.
X A	— Item is not procured or stocked because the requirements for the item will result in the replacement of the next higher assembly.
X B	— Item is not procured or stocked. If not available through salvage, requisition.
XC	— Installation drawing, diagram, instruction sheet, field service drawing, that is identified by manufacturer's part number.
XD	— A support item that is not stocked. When required, item will be procured through normal supply channels.

**NOTE**

Cannibalization or salvage may be used as a source of supply for any items source coded above except those coded XA and aircraft support items as restricted by AR 750-1.

(2) *Maintenance code.* Maintenance codes are assigned to indicate the levels of maintenance authorized to USE and REPAIR support items. The maintenance codes are entered in the third and fourth positions of the Uniform SMR Code format as follows:

(a) The maintenance code entered in the third position will indicate the lowest maintenance level authorized to remove, replace, and use the support item. The maintenance code entered in the third position will indicate one of the following levels of maintenance:

<i>code</i>	<i>Application/Explanation</i>
C	— Crew or operator maintenance performed within organizational maintenance.
O	— Support item is removed, replaced, used at the organizational level.
F	— Support item is removed, replaced, used at the direct support level.
H	— Support item is removed, replaced, used at the general support level.
D	— Support items that are removed, rep W, used at depot, mobile depot, specialized repair activity only.

(b) The maintenance code entered in the fourth position indicates whether the item is to be repaired and identifies the lowest maintenance level with the capability to perform complete repair (i.e., all authorized maintenance actions). This position will contain one of the following maintenance codes:

<i>Code</i>	<i>Application/Explanation</i>
O	— The lowest maintenance level capable of complete repair of the support item is the organizational level.
F	— The lowest maintenance level capable of complete repair of the support item is the direct support level.
H	— The lowest maintenance level capable of complete repair of the support item is the general support level.
D	— The lowest maintenance level capable of complete repair of the support item is the depot level.
L	— Repair restricted to designated specialized repair activity.
Z	— Nonreparable. No repair is authorized.
B	— No repair is authorized. The item may be reconditioned by adjusting, lubricating, etc., at the user level. No parts or special tools are procured for the maintenance of this item.

(3) *Recoverability Code.* Recoverability codes are assigned to support items to indicate the disposition action on unserviceable items. The recoverability code is entered in the fifth position of the Uniform SMR Code format as follows:

<i>Recoverability Codes</i>	<i>Definition</i>
Z	— Nonreparable item. When unserviceable, condemn and dispose at the level indicated in position 3.
O	— Repairable item. When uneconomically repairable, condemn and dispose at organizational level.
F	— Repairable item. When uneconomically repairable, condemn and dispose at the direct support level.
H	— Repairable item. When uneconomically repairable, condemn and dispose at the general support level.
D	— Repairable item. When beyond lower level repair capability, return to depot. Condemnation and disposal not authorized below depot level.
L	— Repairable item. Repair, condemnation, and disposal not authorized below depot/specialized repair activity level.
A	— Item requires special handling or condemnation procedures because of specific reasons (i.e., precious metal content, high dollar value, critical material or hazardous material). Refer to appropriate manuals/directives for specific instructions.

*c. National Stock Number.* Indicates the National stock number assigned to the item and will be used for requisitioning purposes.

*d. Federal Supply Code for Manufacturer (FSCM).* The FSCM is a 5-digit numeric code listed in SB 708-41/42 which is used to identify the manufacturer, distributor, or Government agency, etc.

*e. Part Number.* Indicates the primary number used by the manufacturer (individual, company, firm, corporation, or Government activity), which controls the design and characteristics of the item by means of its engineering drawings, specifications, standards, and inspection requirements to identify an item or range of items.

#### NOTE

When a stock numbered item is requisitioned, the repair part received may have a different part number than the part being replaced.

*f. Description.* Indicates the Federal item name and, if required, a minimum description to identify the item.

*g. Unit of Measure (U/M).* Indicates the standard of the basic quantity of the listed item as used in performing the actual maintenance function. This measure is expressed by a two-character alphabetical abbreviation (e.g., ea, in, pr, etc). When the unit of measure differs from the unit of issue, the lowest unit of issue that will satisfy the required units of measure will be requisitioned.

*h. Quantity Incorporated in Unit.* Indicates the quantity of the item used in the breakout shown on the illustration figure, which is prepared for a functional group, subfunctional group, or an assembly. A "V" appearing in this column in lieu of a quantity indicates that no specific quantity is applicable, (e.g., shims, spacers, etc).

#### 4. Special Information

*a.* The following publications pertain to the AN/T&M-133 and its components  
 TM 5-4120-352-24P, Air Conditioner, Horizontal, Compact 9000 BTU.  
 TM 11-5410-213-14P, Shelter, Electrical Equipment, S-280B/G.

TM 11-5410-213-14P-1, Shelter, Electrical Equipment, S-280C/G.

TM 11-5805-201-20P, Telephone Set, TA-312/PT.

TM 11-5805-201-34P, Telephone Set, TA-312/PT

TM 11-6130-413-24P Battery Charger-Analyzer, AN/USM-432.

TM 11-6625-3052-24P, Multimeter, AN/PSM-45.

*b.* National stock numbers (NSN's) that are missing from P source coded items have been applied for and will be added to this TM by future change/revision when they are entered in the Army Master Data File (AMDF). Until the NSN's are established and published, submit exception requisitions to: Commander, US Army Communications-Electronics Command and Fort Monmouth, ATTN: DRSEL-MM, Fort Monmouth, New Jersey 07703 for the part required to support your equipment.

#### 5. How to locate Repair Parts

*a.* When National stock number or part number is unknown.

(1) *First.* Using the table of contents, determine the functional group within which the item belongs. This is necessary since illustrations are prepared for functional groups and listings are divided into the same groups.

(2) *Second.* Find the illustration covering the functional group to which the item belongs.

(3) *Third.* Identify the item on the illustration and note the illustration figure and item number of the item.

(4) *Fourth.* Using the Repair Parts Listing, find the figure and item number noted on the illustration.

*b.* When National stock number or part number is known

(1) *First.* Using the Index of National Stock Numbers, find the pertinent National stock number or part numbers in alphameric sequence, cross-referenced to the illustration figure number and item number.

(2) *Second.* After finding the figure and item number, locate the figure and item number in the repair parts list.

#### 6. Abbreviations

Not applicable.





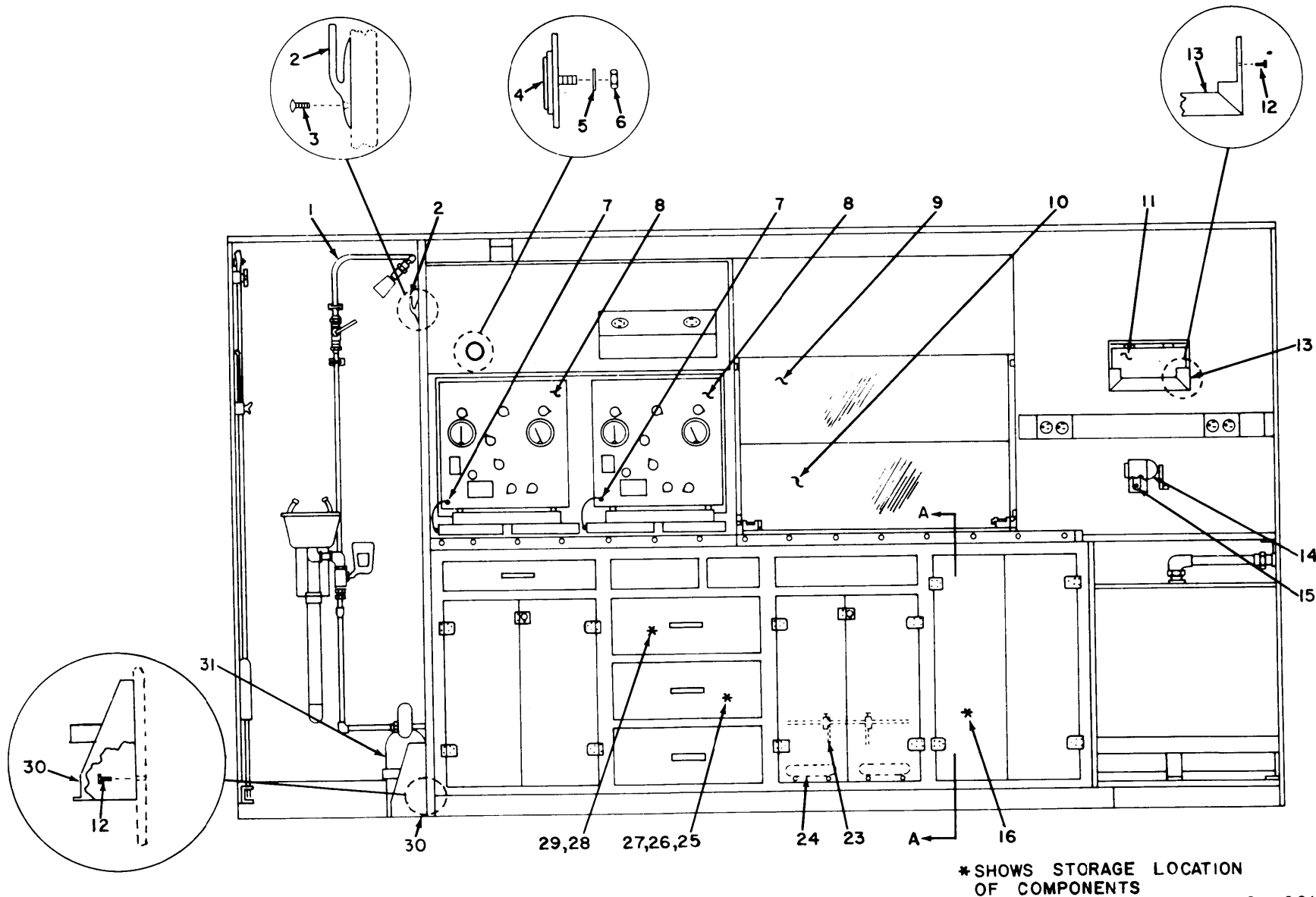


Figure 1. Shop equipment, battery servicing, shelter mounted, AN/TSM-133(sheet 1 of 6).

EL8QG001

4.2

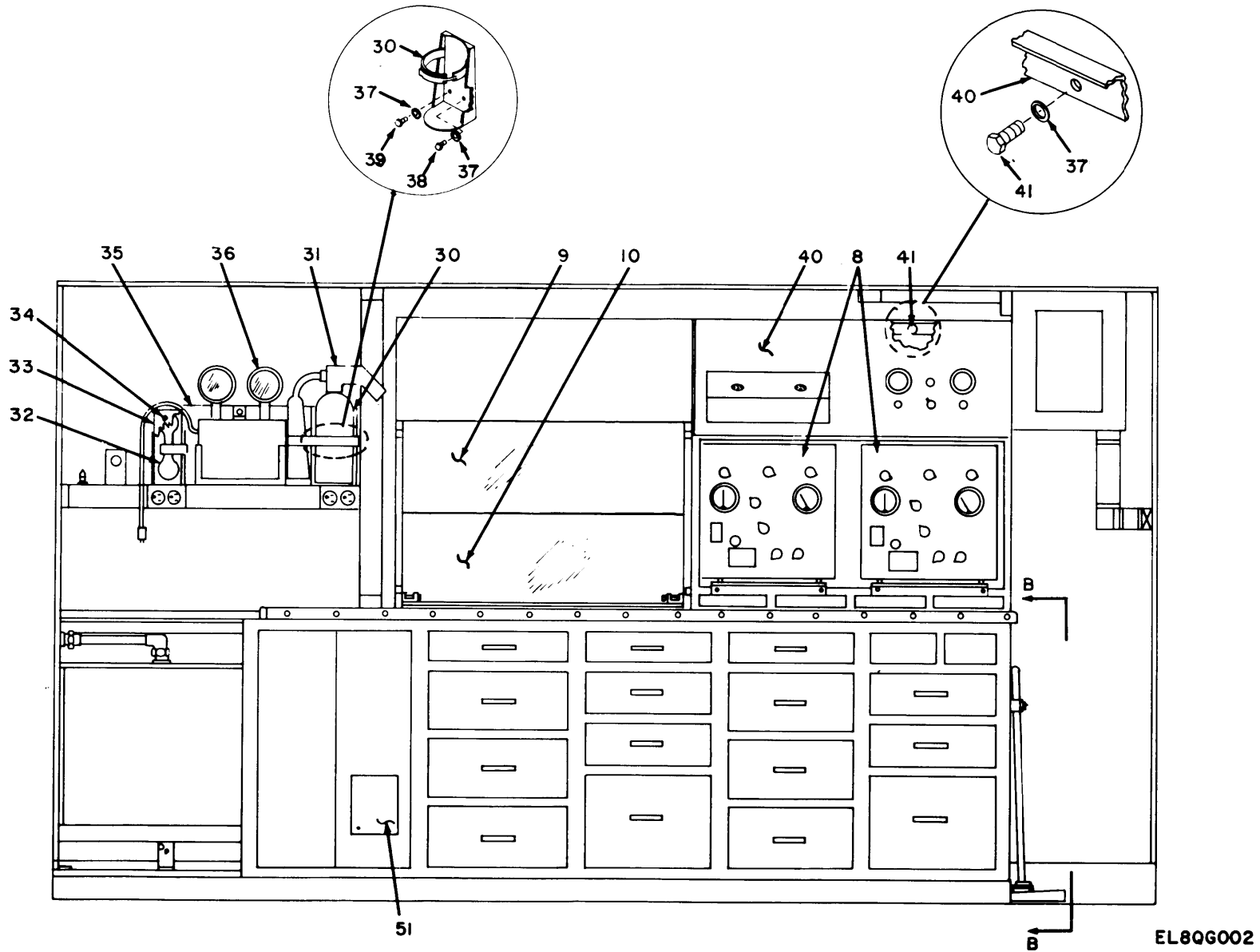


Figure 1. Shop equipment, battery servicing, shelter mounted,  
AN/TSM-133 (sheet 2 of 6).

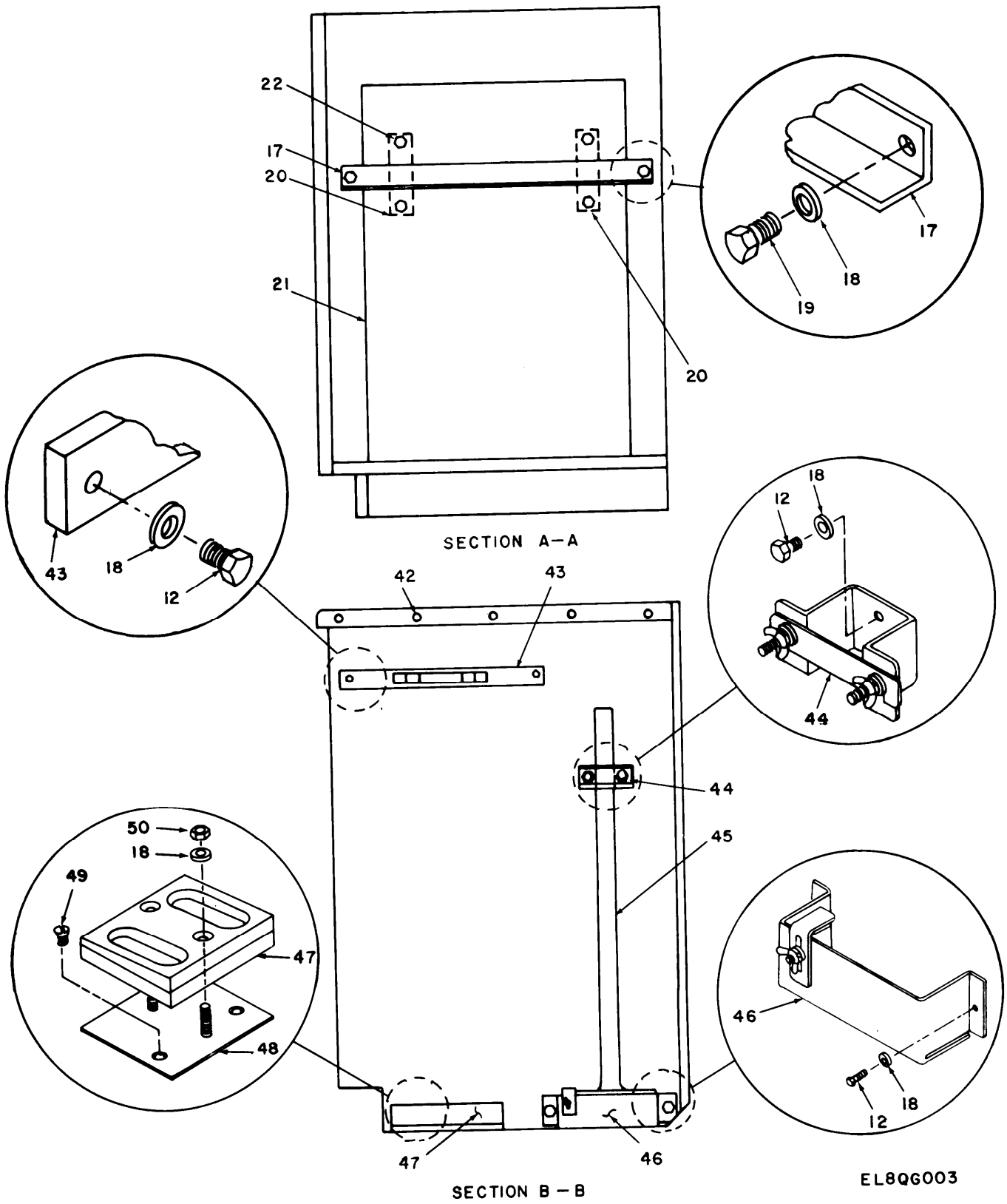
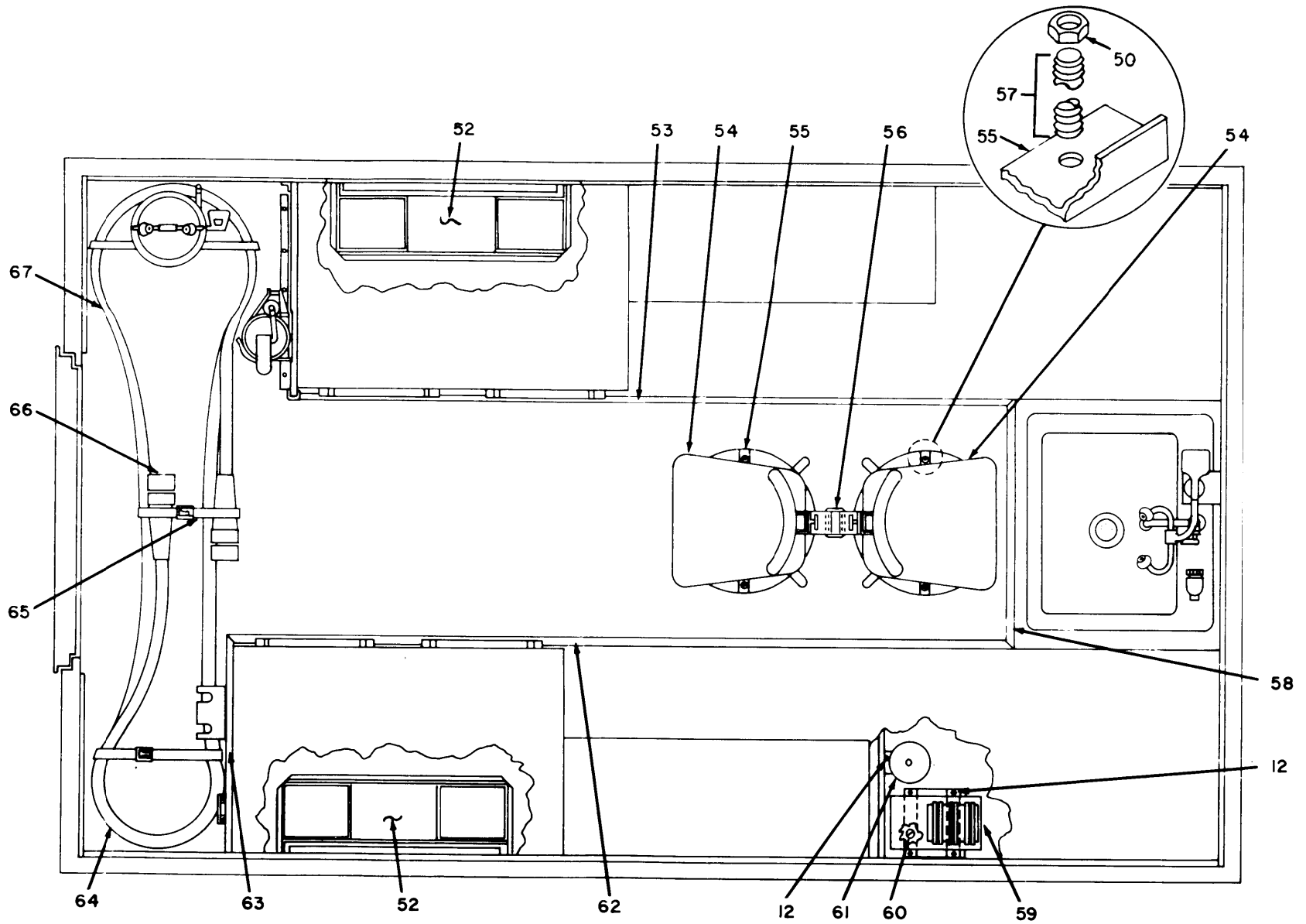


Figure 1. Shop equipment, battery servicing, shelter mounted, AN/TSM-133 (sheet 3 of 6).

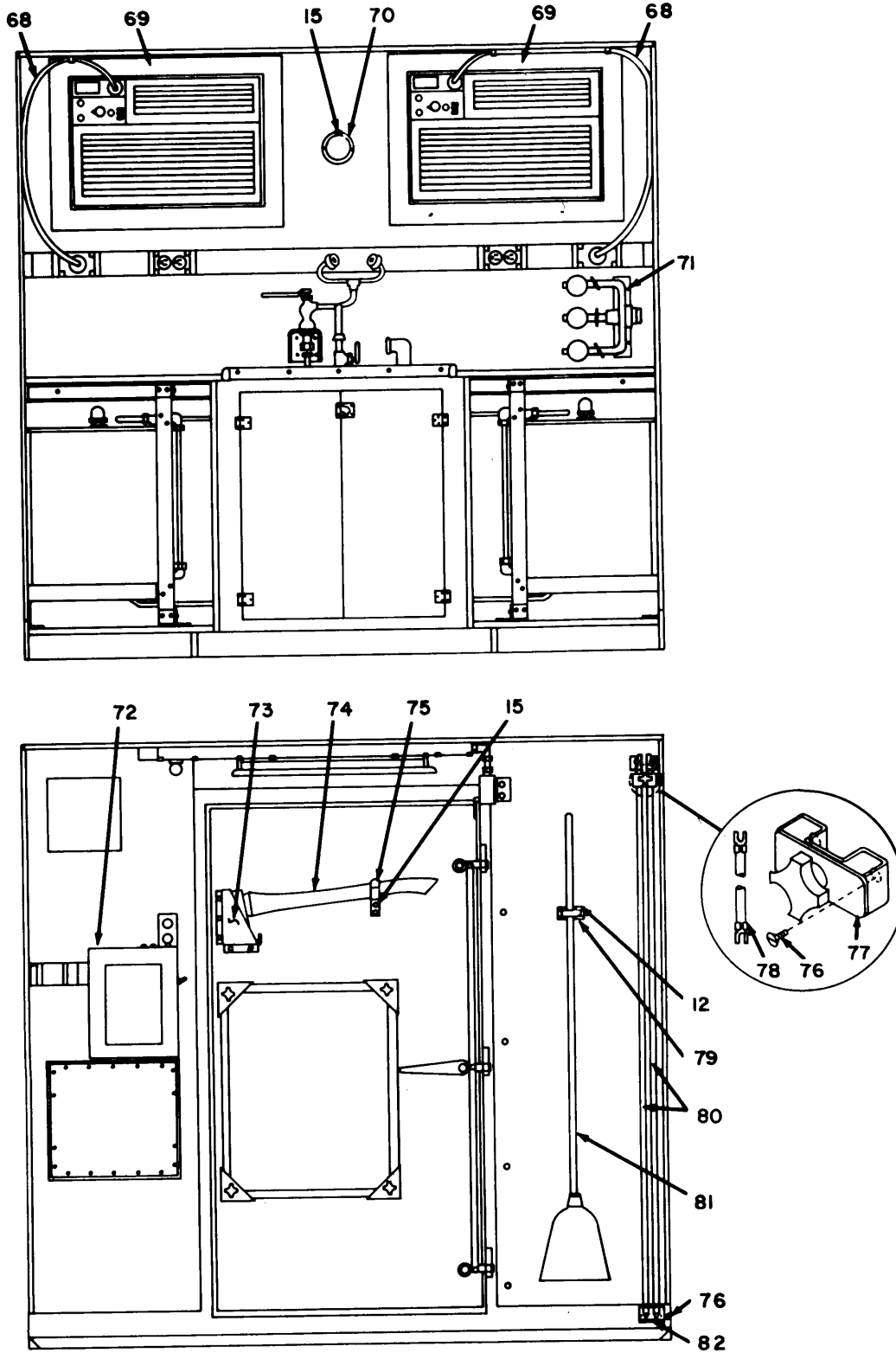
4.4



TM 11-4940-477-24P

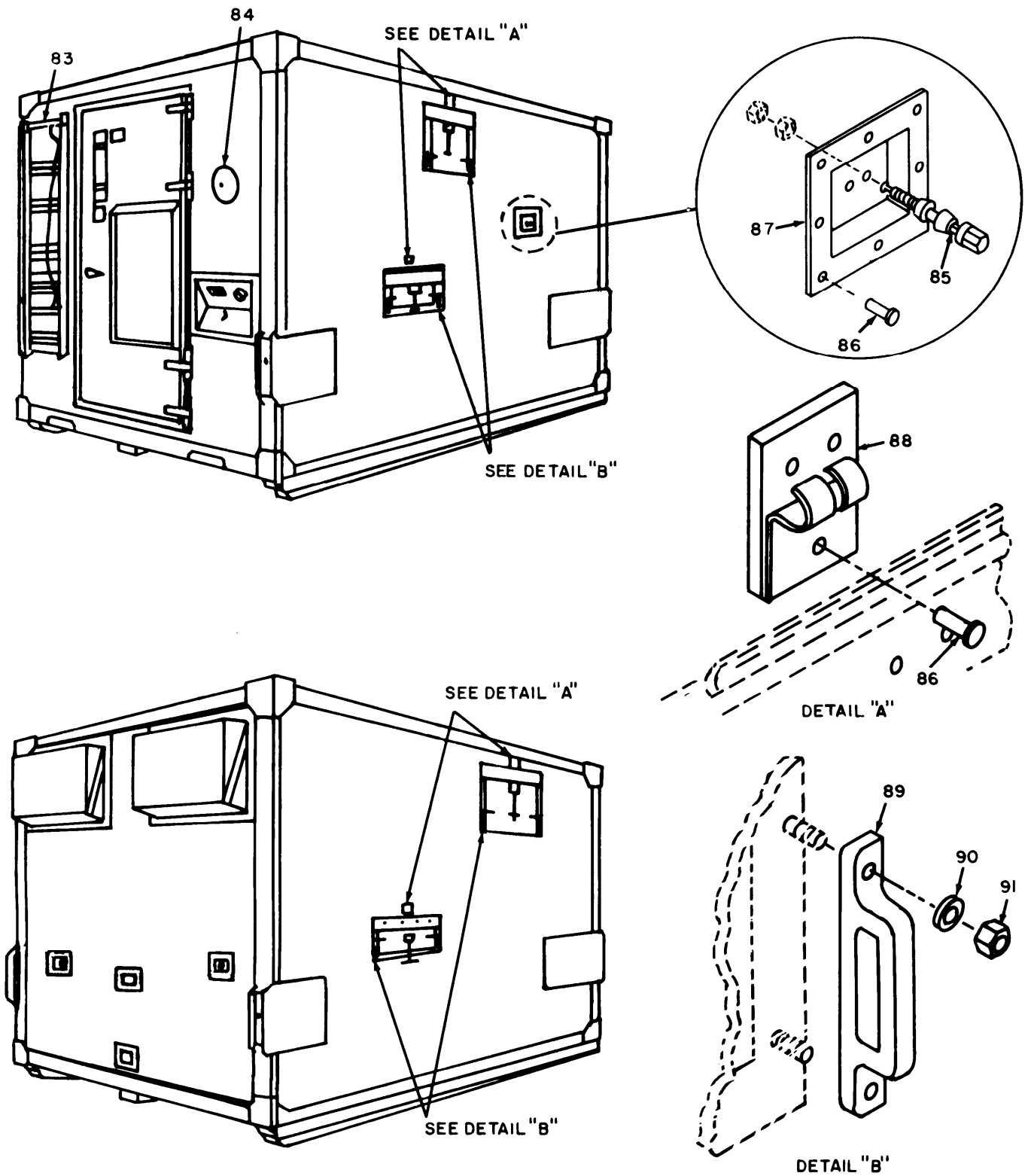
EL8QG004

Figure 1. Shop equipment, battery servicing, shelter mounted, AN/TSM-133(sheet 4 of 6).



EL8QG005

Figure 1. Shop equipment, battery servicing, shelter mounted, AN/TSM-133 (sheet 5 of 6).



EL8QG006

Figure 1. Shop equipment battery servicing, shelter mounted, AN/TSM-133 (sheet 6 of 6).

SECTION II.

REPAIR PARTS LIST

---





SECTION II (1) ILLUSTRATION		(2)	(3)	TM11-4940-477-24P		(6)	(7)	(8)
(A) FIG NO	(B) ITEM NO	SMR CODE	NATIONAL STOCK NUMBER	(4) FSCM	(5) PART NUMBER	DESCRIPTION	USABLE ON CODE U/M	QTY INC IN UNIT
GROUP 00 SHOP EQUIPMENT, BATTERY SERVICING								
SHELTER MOUNTED AN/TSM-133								
1	1	XCFFF		57945	C5079167	PLUMBING INSTL	EA	1
1	2	XBFZZ		80058	A2260-26	HANGER, COAT	EA	2
1	3	PAFZZ		96906	MS51862-34C	SCREW, MACHINE	EA	40
1	4	XBFZZ		21518	883-2-06-F-138	THERMOMETER	EA	1
1	5	PAFZZ	5310-00-167-0843	88044	AN960-1416L	WASHER, FLAT	EA	1
1	6	PAFZZ	5975-00-152-1075	02470	95-32	LOCKNUT, ELECTRICAL	EA	1
1	7	XBFZZ		57945	C5079320	STRAP ASSY, GROUND	EA	4
1	8	PDOOD	6130-01-055-1574	80058	AN/USM-432	CHARGER, BATTERY	EA	4
1	9	XBFZZ		57945	C5079176-2	WINDOW, CHARGER	EA	2
1	10	XBFZZ		57945	C5079255	WINDOW ASSY, CHARGER	EA	2
1	11	PAFZZ		80063	SC-D-539483	FIRST AID KIT	EA	1
1	12	XBFZZ		97619	KC20004-6	BOLT, HEXAGON HEAD	EA	56
1	13	XBOZZ		80063	SC-C-539463	BRACKET ASSY, FAB	EA	1
1	14	PAFZZ	7520-00-162-6178	80063	SC-C-539503	SHARPENER, PENCIL	EA	1
1	15	PAFZZ	5305-00-059-3659	96906	MS51958-63	SCREW, MACHINE	EA	44
1	16	PAFZZ	7520-00-159-4863	80063	SC-D-539454	BASKET, WASTEPAPER	EA	1
1	17	XBFZZ		57945	C5079302	ANGLE	EA	1
1	18	PAFZZ	5310-00-531-9515	88044	AN960C416	WASHER, FLAT	EA	46
1	19	PAFZZ	5305-00-071-2514	96906	MS90728-17	SCREW, CAP, HEXAGON H	EA	2
1	20	XBFZZ		57945	C5079303	SPACER	EA	2
1	21	XBFZZ		57945	C5079297	COVER ASSY, AIR COND	EA	2
1	22	PAFZZ		96906	MS51862-40C	SCREW, MACHINE	EA	4
1	23	XBFZZ		20307	ES-D-212731	CARRIER ASSY, BAT	EA	2
1	24	XBOOO		57945	C5079180	DOLLY ASSY, BATTERY	EA	4
1	25	PDOFF		80058	AN/USM-415	MULIMETER	EA	1
1	26	PAFZZ	7920-00-178-8315	94322	09502210	BRUSH, DUSTING, BENCH	EA	1
1	27	PAFZZ	6230-00-162-1227	80058	TL-337/U	LIGHT, EXTENSION	EA	1
1	28	XBFZZ		73804	CS-1	GOGGLES	EA	2
1	29	PAFZZ		81348	W-F-00421	FLASH LIGHT	EA	1
1	30	PAFZZ	4210-00-288-6849	82796	11900514	BRACKET, FIRE EXTING	EA	2
1	31	XBFZZ		33525	872524	EXTINGUSER, FIRE	EA	2
1	32	PDOFF	5805-00-543-0012	80058	TA312/PT	TELEPHONE SET	EA	1
1	33	PADZZ	5805-00-191-1543	80063	SC-D-539506	HOLDER, TELEPHONE	EA	1
1	34	PAFZZ		96906	MS24693S124	SCREW, MACHINE	EA	3
1	35	XBFZZ		57945	C5079190	BRACKET ASSY, LIGHT	EA	1
1	36	XBFFF		57945	C5079217	LIGHT ASSY, ENER	EA	1
1	37	PAFZZ	5310-00-167-0803	88044	AN960C516	WASHER, FLAT	EA	68
1	38	PAFZZ	5306-00-226-4831	96906	MS90728-38	BOLT, MACHINE	EA	2

SECTION II (1) ILLUSTRATION				TM11-4940-477-24P					
(A) FIG NO	(B) ITEM NO	(2) SMR CODE	(3) NATIONAL STOCK NUMBER	(4) FSCM	(5) PART NUMBER	(6) DESCRIPTION	(7) USABLE ON CODE	U/M	(8) QTY INC IN UNIT
1	39	PAFZZ	5306-00-226-4825	96906	MS90728-32	BOLT,MACHINE		EA	2
1	40	XBFFF		57945	C5079221	CHARGER ASSY,BTRY		EA	1
1	41	PAFZZ	5306-00-655-6170	96906	MS35307-338	BOLT,MACHINE		EA	20
1	42	PAFZZ		96906	MS51862-42C	SCREW,MACHINE		EA	44
1	43	XBFFZ		80063	SC-C-632376	RACK ASSY, TOP RIFLE		EA	1
1	44	XBOZZ		80063	SC-B-539435	BRACKET ASSY, HAMMER		EA	2
1	49	PEFZZ	5120-01-110-9193	80063	SC-D-539505	HAMMER,HAND		EA	1
1	46	PAFFF	5340-01-165-3592	80063	SC-C-539441	HOLDER ASSEMBLY		EA	1
1	47	XBFFZ		80063	SC-C-626846	BASE ASSY,RIFLERACK		EA	1
1	48	XBFFZ		57945	C5079300	PLATE,MOUNTING		EA	1
1	49	PAFZZ	5305-00-719-5007	96906	MS51959-83	SCREW,MACHINE		EA	2
1	50	PAFZZ	5310-00-984-3806	96906	MS51922-9	NUT,SELF-LOCKING,HE		EA	28
1	51	PAFHH	4520-00-177-6198	17032	P15D	HEATER,SPACE,ELECTR		EA	1
1	52	XBFFF		57945	C5079161	DUCT INSTL,AIR		EA	1
1	53	XBFFZ		57945	C5079301-2	TRIM,BENCH TOP		EA	1
1	54	XBFFZ		81348	AAC00295CL2SIZE3	STOOL,DRAFTING		EA	2
1	55	XBFFZ		57945	C5079282	ANGLE,CHAIR TIE DN		EA	2
1	56	PAFZZ		57945	C5079248	STRAP ASSEMBLY		EA	7
1	57	XBFFZ		57945	C5079283	ROD,THREADED		EA	4
1	58	XBFFZ		57945	C5079301-4	TRIM,BENCH TOP		EA	1
1	59	PAFFF	4310-00-765-1877	20024	807CM60	COMPRESSOR UNIT,DIA		EA	1
1	60	PAFZZ	5305-00-071-1324	96906	MS51960-67	SCREW,MACHINE		EA	4
1	61	XBFFZ		57945	C5079125-16	TANK,AIR		EA	1
1	62	XBFFZ		57945	C5079301-1	TRIM,BENCH TOP		EA	1
1	63	XBFFZ		57945	C5079301-3	TRIM,BENCH TOP		EA	1
1	64	PAFFF		80063	SC-D-883964GR9-2	CABLE ASSY,PWR ELEC		EA	1
1	65	XBFFZ		97619	KC29000	STUD,RING		EA	3
1	66	PAOFF		57945	C5079292	HOSE ASSY,WATER		EA	1
1	67	PAFFF		80063	SC-D-883963GR9-3	CABLE,ASSEMBLY,POWE		EA	1
1	68	XBFFZ		57945	C5079291	CABLE ASSY AIR COND		EA	2
1	69	XBFFZ		80058	MODF9000H-3	AIR CONDITIONER		EA	1
1	70	PAFZZ	6645-00-410-2395	57566	8910	CLOCK,PANEL		EA	1
1	71	XBFFZ		57945	C5079315	TESTER INSTL,VENT		EA	1
1	72	XC		57945	C5079126	ELECTRICAL INSTL		EA	1
1	73	XBOZZ		80063	SC-D-539460	BRACKET ASSY,AXE		EA	1
1	74	PAFZZ	5110-00-115-5049	80063	SC-C-539451	AX,SINGLE BIT		EA	1
1	75	PAFZZ	5340-01-145-4031	80063	SC-B-539439	BRACKET,DOUBLE ANGL		EA	1
1	76	PAFZZ	5305-00-781-5658	96906	MS24693S102	SCREW,MACHINE		EA	4
1	77	PAOZZ	5855-01-072-9865	80063	SC-C-539421	BRACKET ASSEMBLY		EA	1
1	78	PAFZZ		80063	SC-B-539492	LEAD,ELECTRICAL		EA	2

SECTION II		TM11-4940-477-24P							
(1)	(2)	(3)	(4)	(5)	(6)	(7)	(8)		
ILLUSTRATION					DESCRIPTION		QTY	INC	
(A)	(B)	NATIONAL		PART			IN		
FIG	ITEM	STOCK	FSCM	NUMBER		USABLE ON CODE	U/M	UNIT	
NO	NO	NUMBER							
1	79	XBFZZ		57945	C5079321		EA	1	
1	80	PADZZ	5975-00-224-5260	51033	9246		EA	2	
1	81	XBFZZ		80058	H-B-71		EA	1	
1	82	XBFZZ		80063	SC-B-693708		EA	1	
1	83	XBFFF		57945	C5079290		EA	1	
1	84	PAFZZ		19557	340-62		EA	1	
1	85	PAFZZ	5940-00-269-2219	83330	257 BLACK		EA	2	
1	86	XBFZZ		07707	AD64AH		EA	27	
1	87	XBFZZ		57945	C5079171-1		EA	1	
1	88	XBFZZ		80063	SC-C-539849		EA	4	
1	89	PAFZZ	5340-00-134-3482	80063	SC-B-539597		EA	8	
1	90	PAFZZ	5310-00-167-0801	88044	AN960C10		EA	36	
1	91	PAFZZ	5310-00-926-1835	96906	MS21083-C3		EA	34	



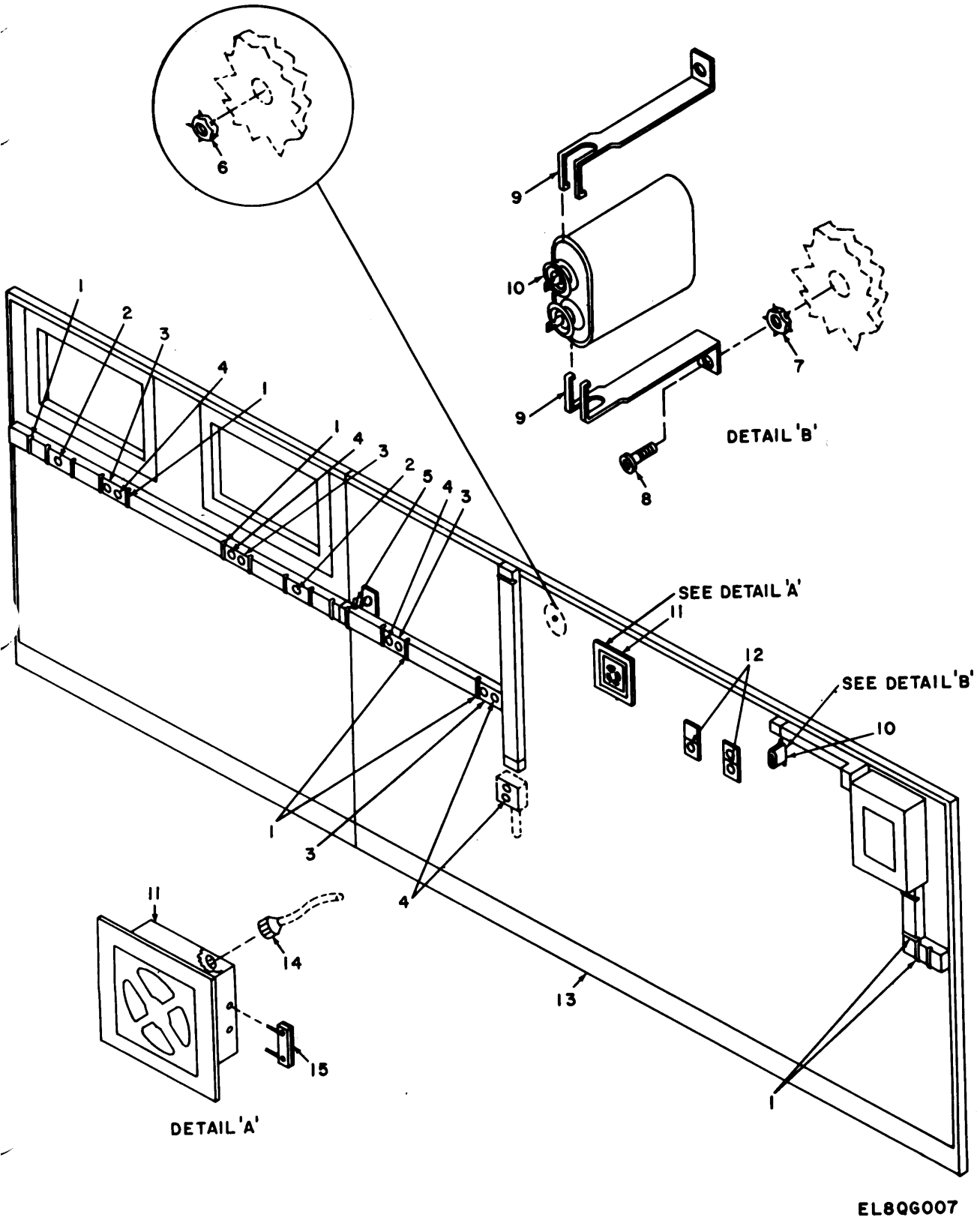
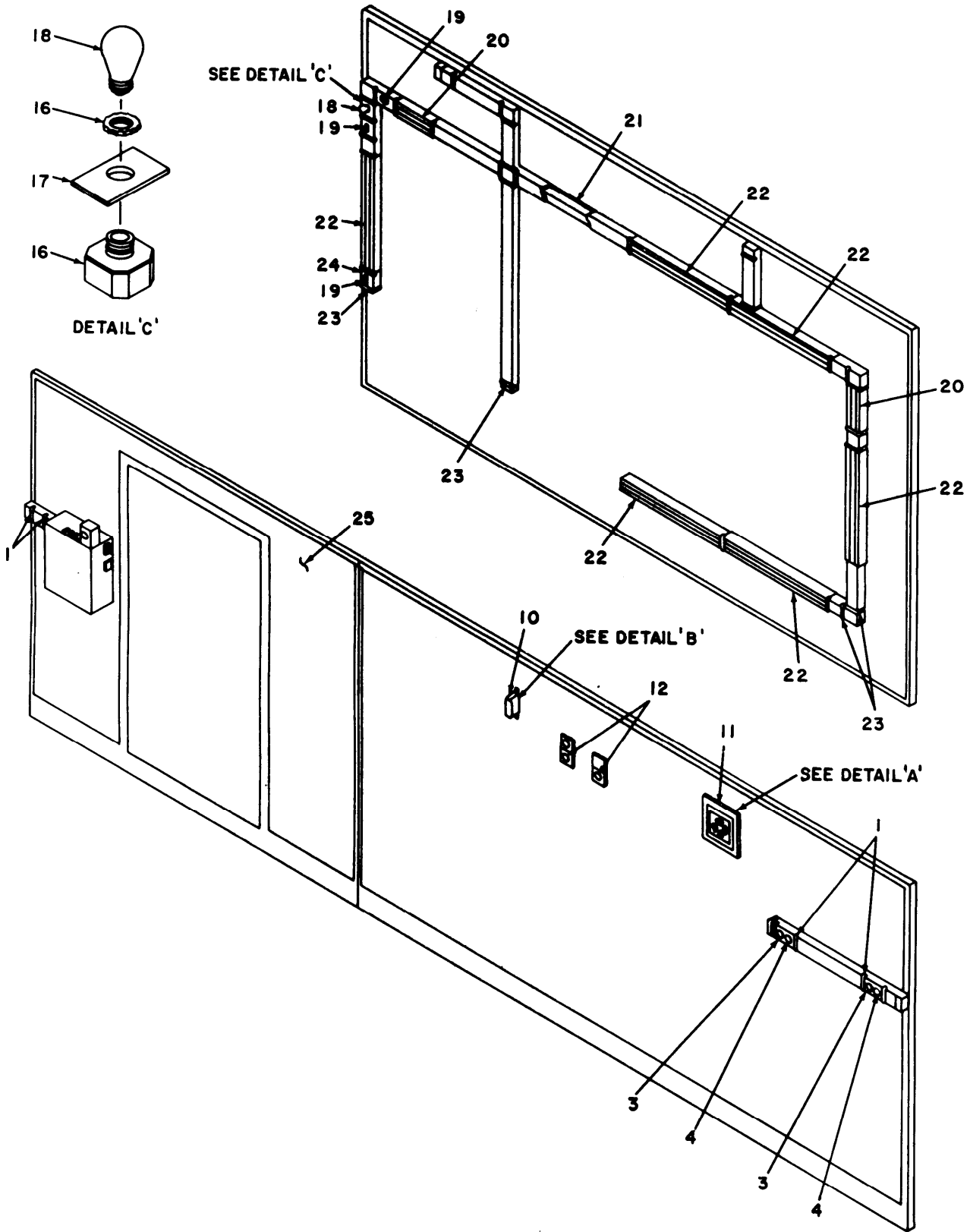


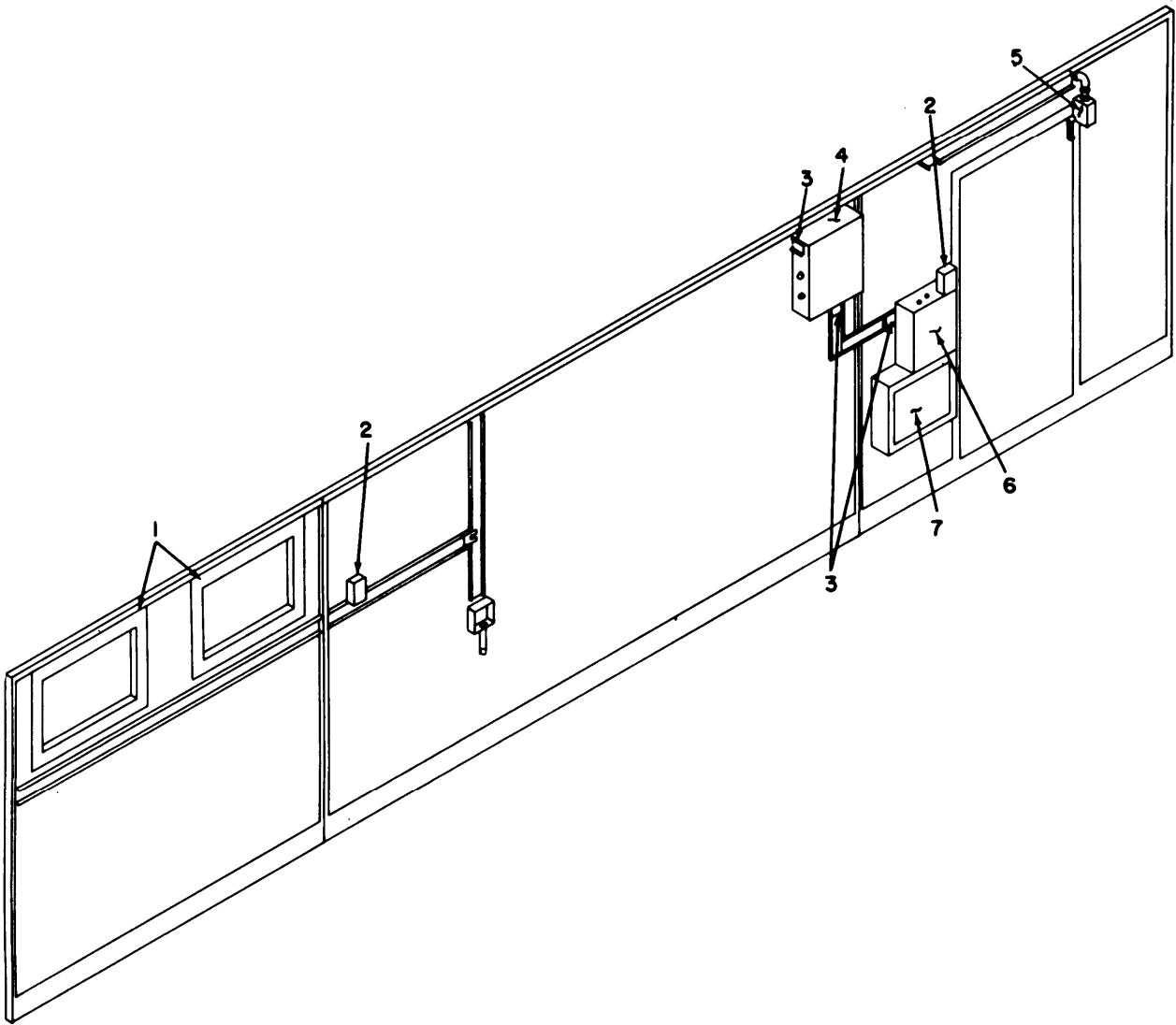
Figure 2. Electrical installation (sheet 1 of 2).



EL8QG008

Figure 2. Electrical installation (sheet 2 of 2).

SECTION II (1) ILLUSTRATION		(2)	(3)	TM11-4940-477-24P		(6)	(7)	(8)
(A) FIG NO	(B) ITEM NO	SMR CODE	NATIONAL STOCK NUMBER	(4) FSCM	(5) PART NUMBER	DESCRIPTION	USABLE ON CODE U/M	QTY INC IN UNIT
GROUP 01 ELECTRICAL INSTALLATION								
2	1	XBFZZ		57945	C5079271	CLIP, COVER	EA	28
2	2	XBFZZ		77820	72130-FR	CONNECTOR, RCPT, ELEC	EA	2
2	3	XBFZZ		57945	C5079270	COVER, RECEPTACLE	EA	6
2	4	XBFZZ	5935-01-012-3080	74545	5262	CONNECTOR, RECEPTACL	EA	8
2	5	XBFZZ		77820	PT00E-8-2P	CONNECTOR, RCPT, ELEC	EA	1
2	6	XBFZZ		03481	S25-380	NUT, PLAIN, BLIND RIV	EA	112
2	7	XBFZZ		03481	S31-425	NUT, PLAIN, BLIND RIV	EA	20
2	8	PAFZZ	5305-00-059-3661	96906	MS51958-65	SCREW, MACHINE	EA	4
2	9	XBFZZ		14655	30434-31	CLAMP, CAPACITOR	PR	2
2	10	XBFZZ		14655	KKNP66P105QP1	CAPACITOR, FXD, PAPER	EA	2
2	11	PAFZZ	4140-00-236-0730	81349	M23071/7-001	FAN, VENTILLATING	EA	2
2	12	XBFZZ		71183	71430FR	CONNECTOR, RCPT, ELEC	EA	4
2	13	XC		57945	C5079130	SHELTER, MODIFIED	EA	1
2	14	PAFZZ	5935-00-815-1541	96906	MS3116E8-4S	CONNECTOR, PLUG, ELEC	EA	2
2	15	PAFZZ	5930-01-051-5576	95146	RS-51NO	SWITCH, MERCURY	EA	2
2	16	PAAFZZ	6250-00-299-6562	79500	4109	LAMPHOLDER	EA	1
2	17	XBFZZ		80063	SC-B-681073-2	COVER, MARKED	EA	1
2	18	XBFZZ		65083	R2A	LAMP, NEON	EA	1
2	19	XBFZZ		65083	1201	SWITCH	EA	3
2	20	PAFFF	6210-00-173-2398	80063	SC-D-681033	INCANDESCENT LAMP A	EA	2
2	21	XCFFF		57945	C5079127	RACEWAY INSTL	EA	1
2	22	XBFFF		57945	C5079203	LAMP INSTL, FLUOR	EA	6
2	23	XBFZZ		80063	SC-B-539564-2	CLIP, COVER	EA	20
2	24	XBFZZ		80063	SC-C-539562-1	COVER, MARKED	EA	1
2	25	XC		57945	C5079129	PANEL INTL, ROAD	EA	1

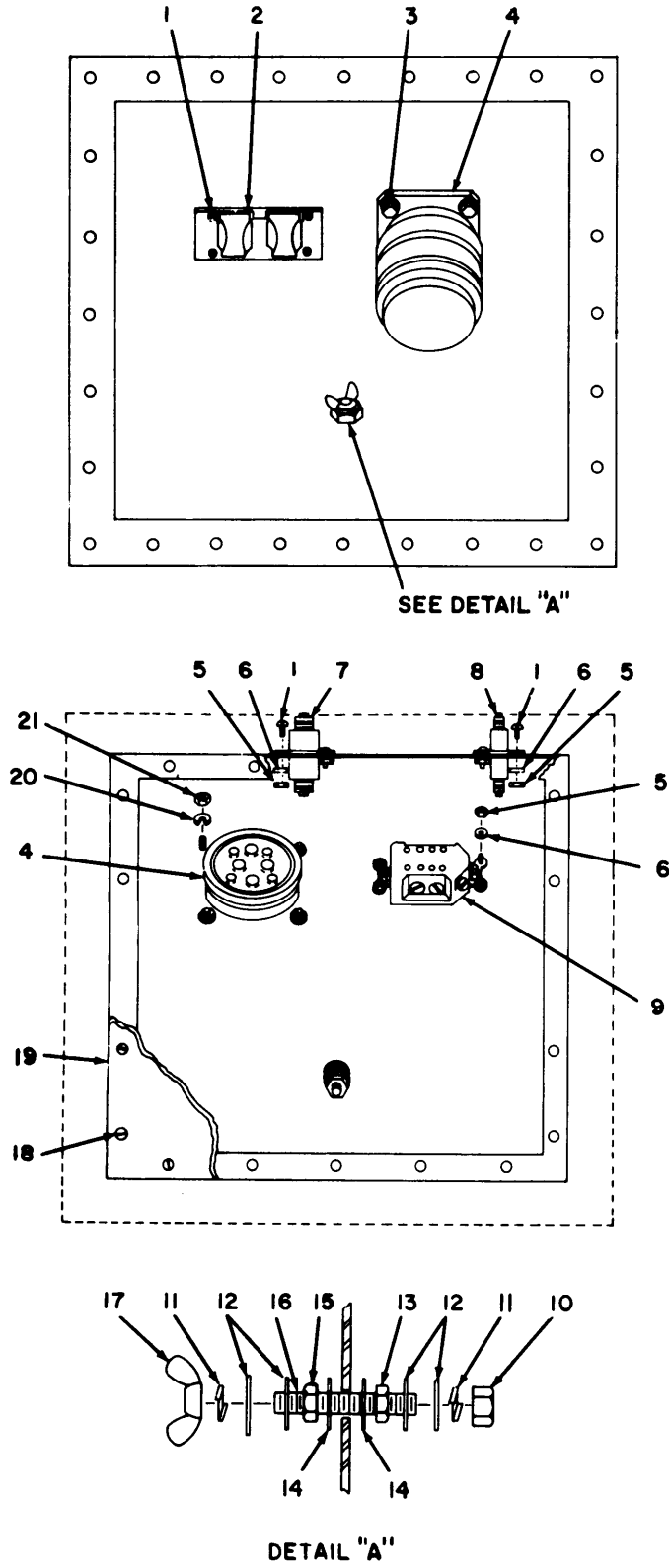


EL8QG009

Figure 3. Raceway installation.



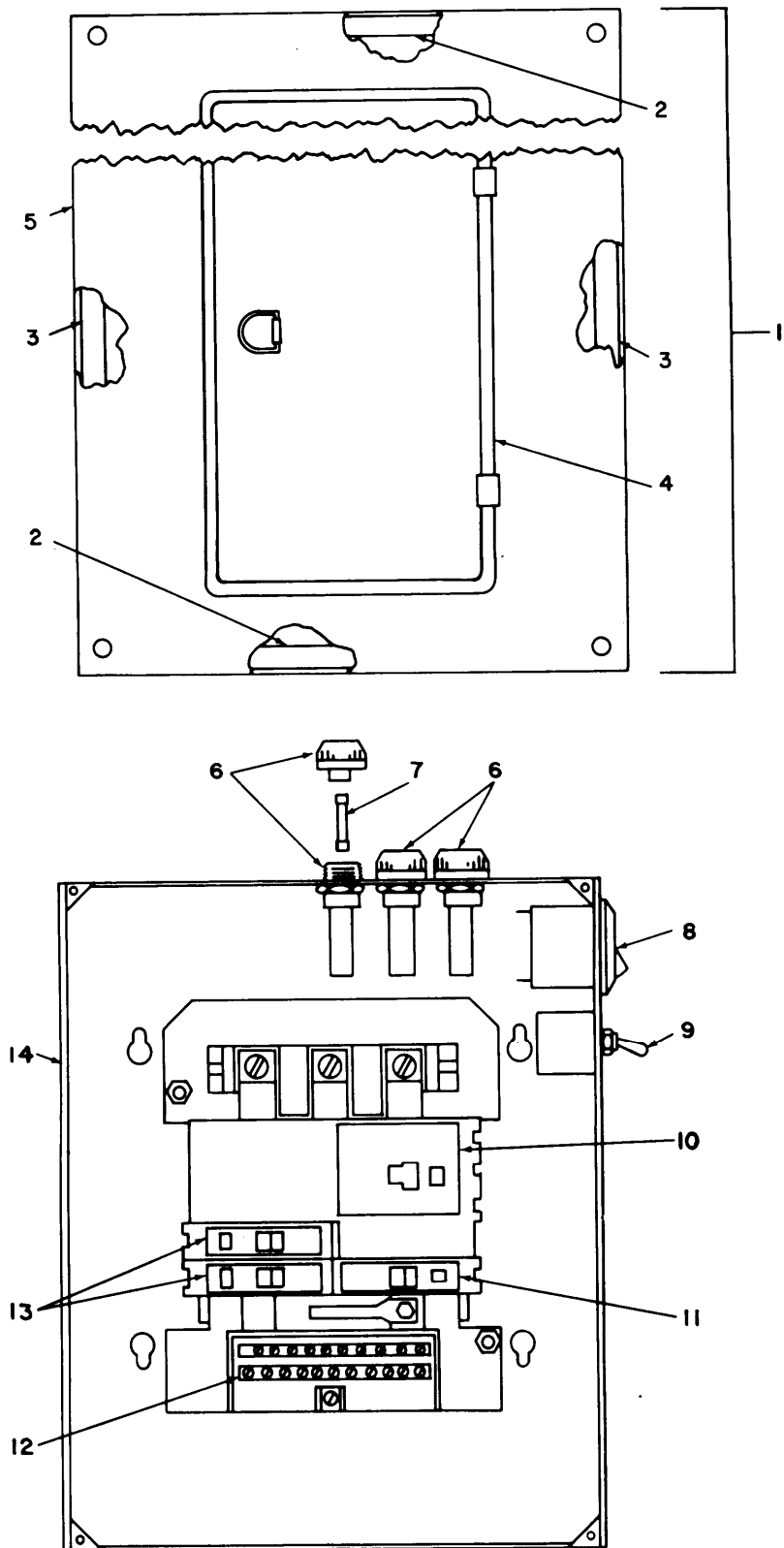
SECTION II (1) ILLUSTRATION		(2)	(3)	TM11-4940-477-24P		(6)	(7)	(8)
(A) FIG NO	(B) ITEM NO	SMR CODE	NATIONAL STOCK NUMBER	(4) FSCM	(5) PART NUMBER	DESCRIPTION	USABLE ON CODE U/M	QTY INC IN UNIT
						GROUP 0101 RACEWAY INSTALATION		
3	1	XC		57945	C5079128-1	FRANES INSTALLATION	EA	1
3	2	PAFZZ		41326	CR2943AA101B-TR1 P	SWITCH	EA	2
3	3	PAFZZ		95987	CSG-20	GOMET	FT	3
3	4	XBFFF		57954	C5079259	PANEL,DISTRIBUTION	EA	1
3	5	XBFFZ		56365	C62B2W/EA-11ARM	SWITCH,BLACKOUT	EA	1
3	6	XBFFF		57945	C5079258	PANEL,MAIN DISTR	EA	1
3	7	XBFFF		57945	C5079216	PANEL ASSY,PWR ENTR	EA	1



EL8QG010

figure 4. Power entrance panel assembly.

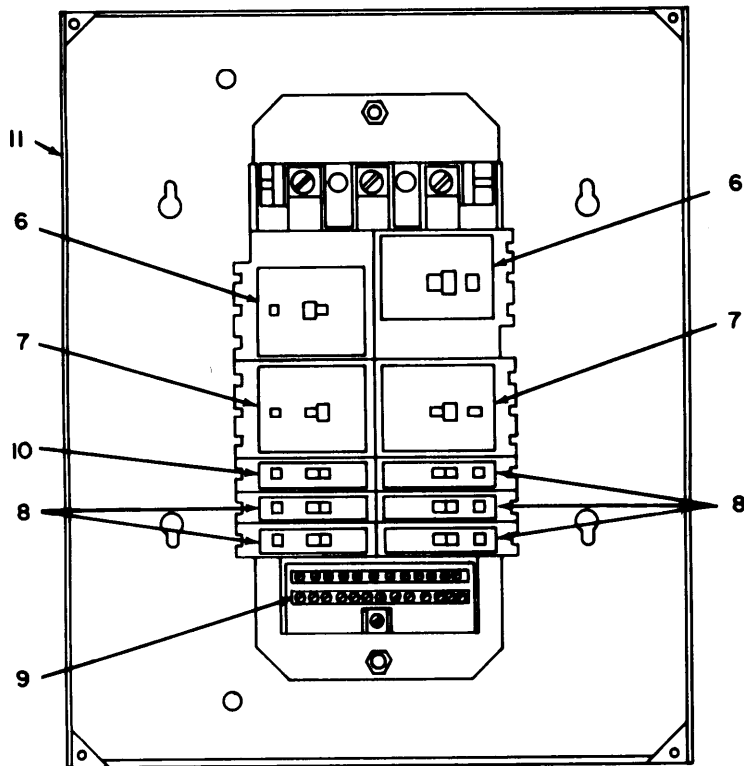
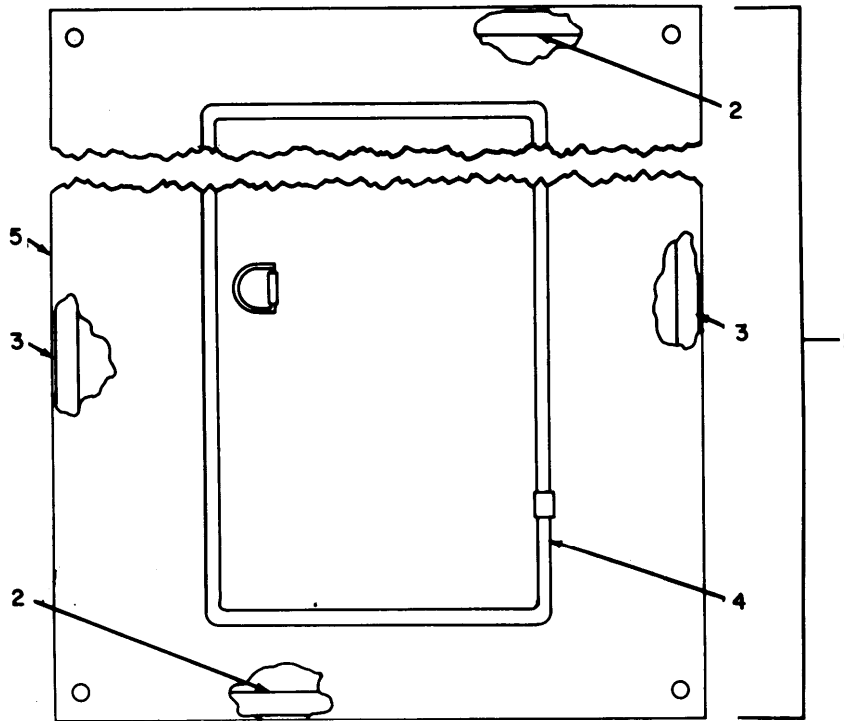
SECTION II (1) ILLUSTRATION		TM11-4940-477-24P		(6)		(7)		(8)	
(A) FIG NO	(B) ITEM NO	(2) SMR CODE	(3) NATIONAL STOCK NUMBER	(4) FSCM	(5) PART NUMBER	DESCRIPTION	USABLE ON CODE	U/M	QTY INC IN UNIT
GROUP 010102 PANEL ASSY, POWER ENTRY									
4	1	PAFZZ	5305-00-054-6656	96906	MS51957-32	SCREW, MACHINE		EA	20
4	2	XBFZZ		21873	M3780	COVER, RECEPTACLE		EA	1
4	3	PAFZZ	5306-00-151-1426	88044	AN4-6A	BOLT, MACHINE		EA	4
4	4	PAFZZ	5935-01-103-6064	969063	MS90558C44412P	CONNECTOR, RECEPTACLE		EA	1
4	5	PAFZZ	5310-00-934-9763	96906	MS35649-265	NUT, PLAIN, HEXAGON		EA	20
4	6	PAFZZ	5310-00-082-1404	96906	MS27183-6	WASHER, FLAT		EA	20
4	7	PAFZZ	5910-00-949-4916	93790	NFT-193	FILTER, FEEDTHRU		EA	4
4	8	PAFZZ		14655	NFF-315-D	FILTER		EA	2
4	9	PAFZZ	5935-01-082-5372	7582	5262	CONNECTOR, RECEPTACLE		EA	1
4	10	PAFZZ	5310-01-034-2835	96906	MS51922-19	NUT, SELF-LOCKING, HE		EA	1
4	11	PAFZZ	5310-00-184-8971	96906	MS35338-103	WASHER, LOCK		EA	2
4	12	PAFZZ		96906	MS15794-914	WASHER, FLAT		EA	4
4	13	PAFZZ	5310-00-056-3394	96906	MS35649-2385	NUT, PLAIN, HEXAGON		EA	2
4	14	PAFZZ	5310-00-061-1258	96906	MS45904-76	WASHER, LOCK		EA	2
4	15	PAFZZ	5310-00-918-6921	96906	MS35691-20	NUT, PLAIN, HEXAGON		EA	2
4	16	XBFZZ		80063	SC-B-535459	STUD, THREADED		EA	1
4	17	PAFZZ	5310-00-543-4717	96906	MS35425-28	NUT, PLAIN, WING		EA	1
4	18	PAFZZ	5305-00-054-6667	96906	MS51957-42	SCREW, MACHINE		EA	18
4	19	XBFZZ		57945	C5079211	COVER, POWER ENTR		EA	1
4	20	PAFZZ	5310-00-582-5965	96906	MS35338-44	WASHER, LOCK		EA	4
4	21	PAFZZ	5310-00-853-9335	96906	MS35691-13	NUT, PLAIN, HEXAGON		EA	4



EL8QG011

Figure 5. Main distribution panel.

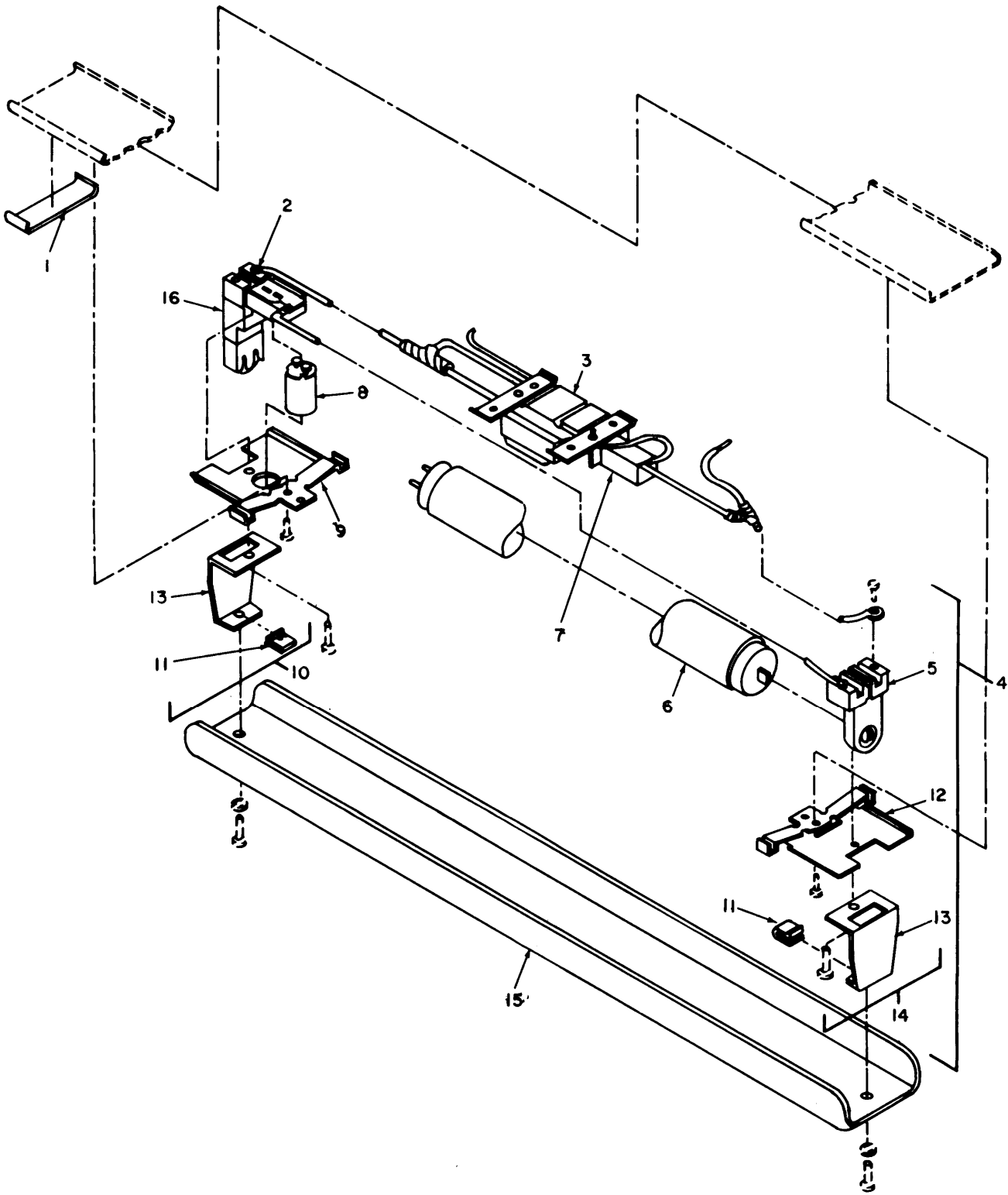
SECTION II (1) ILLUSTRATION		TM11-4940-477-24P		(6)		(7)		(8)	
(A) FIG NO	(B) ITEM NO	(2) SMR CODE	(3) NATIONAL STOCK NUMBER	(4) FSCM	(5) PART NUMBER	DESCRIPTION	USABLE ON CODE	U/M	QTY INC IN UNIT
GROUP 010103 PANEL MAIN DISTRIBUTION									
5	1	XBFFZ		57945	C5079304	COVER,DISTR PANEL		EA	1
5	2	XBFFZ		57945	C5079304-1	GASKET		EA	2
5	3	XBFFZ		57945	C5079304-2	GASKET		EA	2
5	4	XBFFZ		76385	ZX4237	GASKET		EA	1
5	5	PAFZZ	5925-00-572-7323	56365	QOC12S	COVER,CIRCUIT BREAK		EA	1
5	6	PAFZZ	5920-00-074-4609	75915	344125A	FUSEHOLDER,EXTRACTO		EA	3
5	7	PAFZZ	5920-00-665-0902	75915	3AG	FUSE,CARTRIDGE		EA	3
5	8	PAFZZ		74193	TX1-P15-U00-WH2	CIRCUIT BREAKER		EA	1
5	9	PAFZZ	5930-00-655-1582	96906	MS35059-23	SWITCH,TOGGLE		EA	2
5	10	PAFZZ		56365	Q13100-1021	CIRCUIT BREAKER		EA	1
5	11	PAFZZ	5925-00-818-4811	56365	Q0115	CIRCUIT BREAKER		EA	1
5	12	PAFZZ	5940-00-433-7481	56365	PK15GTA	TERMINAL BOARD		EA	1
5	13	PAFZZ	5925-00-583-7941	56365	Q0120	CIRCUIT BREAKER		EA	2
5	14	PAFZZ	5925-00-710-1664	56365	Q0412-24	CIRCUIT BREAKER		EA	1



EL8QG012

Figure 6. Distribution panel.

SECTION II (1) ILLUSTRATION		(2)	(3)	TM11-4940-477-24P		(6)	(7)	(8)
(A) FIG NO	(B) ITEM NO	SMR CODE	NATIONAL STOCK NUMBER	(4) FSCM	(5) PART NUMBER	DESCRIPTION	USABLE ON CODE	U/M
						GROUP 010104 PANEL DISTRIBUTION		
6	1	XBFFZ		57945	C5079305	COVER, DISTA PANEL	EA	1
6	2	XBFFZ		57945	C5079305-1	GASKET	EA	2
6	3	XBFFZ		57945	C5079305-2	GASKET	EA	2
6	4	XBFFZ		76385	ZX4237	GASKET	EA	1
6	5	XBFFZ		56365	Q0C20WS	COVER	EA	1
6	6	PAFZZ		56365	Q0360-1021	CIRCUIT BREAKER	EA	2
6	7	PAFZZ	5925-00-080-2162	81348	WC375/03-002	CIRCUIT BREAKER	EA	2
6	8	PAFZZ	5925-00-583-7941	56365	Q0120	CIRCUIT BREAKER	EA	5
6	9	PAFZZ	5925-00-597-1542	14280	PK18GTA	GROUND BAR KIT	EA	1
6	10	PAFZZ	5925-00-818-4811	56365	Q0115	CIRCUIT BREAKER	EA	1
6	11	PAFZZ	5925-00-710-1663	14280	Q0420-30W	CIRCUIT BREAKER BOX	EA	1

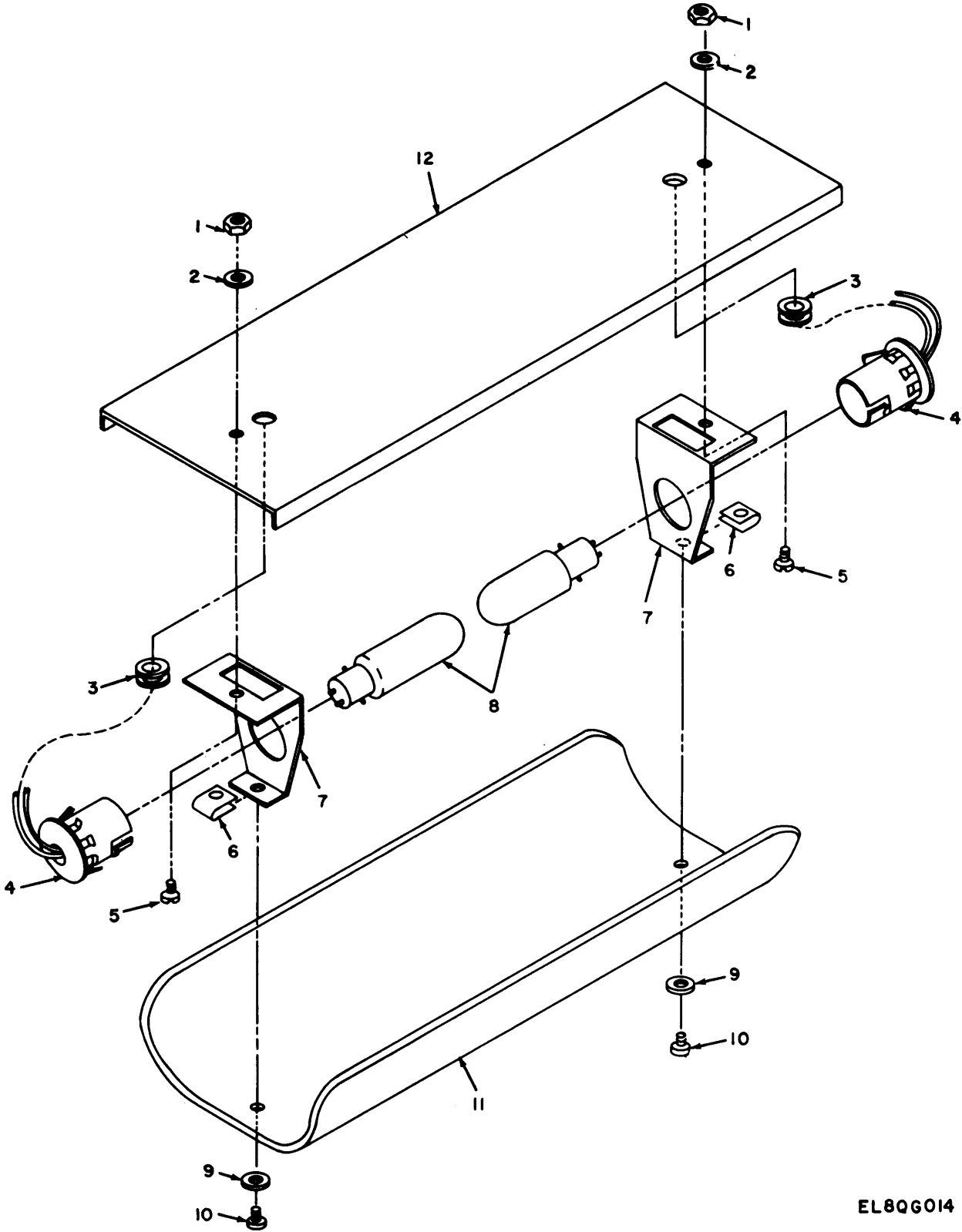


EL8QG013

Figure 7. Fluorescent lamp installation.



SECTION II (1) ILLUSTRATION		TM11-4940-477-24P		(6) DESCRIPTION		(7)	(8)
(A) FIG NO	(B) ITEM NO	(2) SMR CODE	(3) NATIONAL STOCK NUMBER	(4) FSCM	(5) PART NUMBER	USABLE ON CODE U/M	QTY INC IN UNIT
GROUP 0102 LAMP INSTALLATION FLUORESCENT							
7	1	PAFZZ	5340-00-205-3486	80063	SC-B-539564-2		EA 2
7	2	PAFZZ	5940-00-807-9057	00779	34312		EA 1
7	3	XBFZZ		85999	89G457		EA 1
7	4	XAFF		80063	C5079202		EA 1
7	5	PAFZZ	6250-00-175-2559	41326	78X491		EA 1
7	6	PAFZZ	6240-00-152-2996	65083	F20T12/CW		EA 1
7	7	PAFZZ	5915-01-153-2417	32159	C-85355-B		EA 1
7	8	PAFZZ	6250-00-194-4794	91595	FS2NA		EA 1
7	9	PAFZZ	6250-00-275-1935	80063	SC-B-539610-2		EA 1
7	10	PAFZZ	6250-01-150-5369	80063	SC-C-539561GR2		EA 1
7	11	PAFZZ	5310-00-144-8453	96906	MS90724-7		EA 1
7	12	PAFZZ	6250-00-270-6799	80063	SC-B-539609-2		EA 1
7	13	PAFZZ	6250-00-449-7859	80063	SC-C-681035		EA 6
7	14	XBFZZ		80063	SC-C-539560GR2		EA 1
7	15	PAFZZ	6210-00-921-6682	80063	SC-B-539466		EA 1
7	16	XBFZZ		93201	78X736		EA 1



EL8QG014

Figure 8. Incandescent Lamp assembly.

SECTION II (1) ILLUSTRATION		TM11-4940-477-24P							
(A) FIG NO	(B) ITEM NO	(2) SMR CODE	(3) NATIONAL STOCK NUMBER	(4) FSCM	(5) PART NUMBER	(6) DESCRIPTION	(7) USABLE ON CODE	U/M	(8) QTY INC IN UNIT
						GROUP 0103 LAMP ASSY, INCANDESCENT			
8	1	PAFZZ	5310-00-081-8087	96906	MS21044N06	NUT, SELF-LOCKING, HE	EA		2
8	2	PAFZZ	5310-00-082-1404	96906	MS27183-6	WASHER, FLAT	EA		2
8	3	PAFZZ	5325-00-174-5317	96906	MS35489-4	GROMMET, NONMETALLIC	EA		2
8	4	PAFZZ	6250-00-995-9074	71744	4365-034	LAMPHOLDER	EA		2
8	5	PAFZZ	5305-00-984-4988	96906	MS35206-228	SCREW, MACHINE	EA		2
8	6	PAFZZ	5310-00-144-8453	96906	MS90724-7	NUT, SHEET SPRING	EA		2
8	7	PAFZZ	6250-00-449-7859	80063	SC-C-681035	COVER, LAMP	EA		2
8	8	PAFZZ		24455	25T8DC	LAMP, INCANDESCENT	EA		2
8	9	PAFZZ	5310-00-809-8544	96906	MS27183-7	WASHER, FLAT	EA		2
8	10	PAFZZ	5305-00-984-6193	96906	MS35206-245	SCREW, MACHINE	EA		2
8	11	PAFZZ	6210-00-451-8350	80063	SC-C-547186	WINDOW, LIGHTING FIX	EA		1
8	12	PAFZZ	5975-01-033-9750	80063	SC-C-681034	COVER, RACEWAY	EA		1

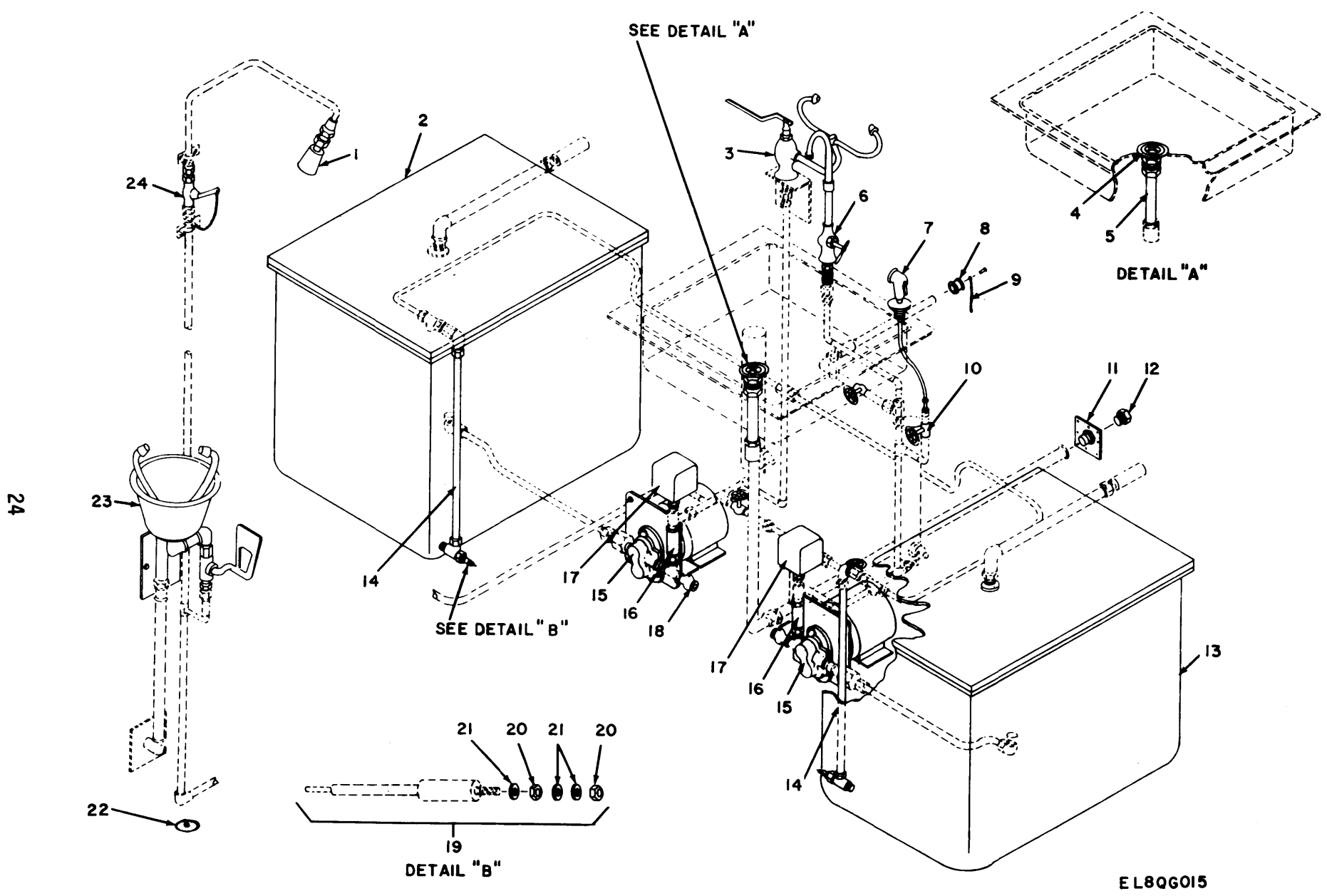


Figure 9. Plumbing installation.

SECTION II (1) ILLUSTRATION		(2)	(3)	TM11-4940-477-24P		(6)	(7)	(8)
(A) FIG NO	(B) ITEM NO	SMR CODE	NATIONAL STOCK NUMBER	(4) FSCM	(5) PART NUMBER	DESCRIPTION	USABLE ON CODE U/M	QTY INC IN UNIT
GROUP 02 PLUMBING INSTALLATION								
9	1	XBFZZ		3T553	23D23	SHOWER HEAD	EA	1
9	2	XBFZZ		57945	C5079246LH	TANK, 30 GALLON, LH	EA	1
9	3	XBFZZ		87327	SE570	EYEWASH ASSY	EA	1
9	4	XBFZZ		3T553	20D150	BASKET, SINK	EA	1
9	5	XBFZZ		3T553	18050-1 1/4X6IN	TAIL PIECE	EA	1
9	3	XBFZZ		3T553	3574-2	FAUCET, SINGLE	EA	1
9	7	XBFZZ		57945	C5079167-32	SPRAY & HOSE ASSY	EA	1
9	8	XBFZZ		57945	C5079294	CAP ASSY, HOSE CONN	EA	3
9	9	XBFZZ		10860	NAS1201C6A16A	CHAIN ASSY, BEAD	IN	8
9	10	XBFZZ		3T553	726-3/8	VALVE, STOP & WASTE	EA	4
9	11	XBFZZ		57945	C5079235	ADAPTER, DRAIN OUT	EA	2
9	12	XBFZZ		72423	4173-200	PLUG, 1 INCH	EA	2
9	13	XBFZZ		57945	C5079246RH	TANK, 30 GALLON, RH	EA	1
9	14	XBFZZ		57945	C5079167-50	INDICATOR, SIGHT, QTY	EA	2
9	15	PAFFF		16327	7P041	PUMP WATER	EA	2
9	16	XBFZZ		86768	481-1/4B2-2	VALVE, CHECK	EA	2
9	17	PAFZZ	5930-01-153-0103	97619	KC72500	SWITCH, PRESSURE	EA	2
9	18	XBFZZ		3T553	17D56-1/4	COCK, DRAIN	EA	2
9	19	XBFZZ		57945	C5079293-1	PROBE ASSY, LOW LVL	EA	2
9	20	PAFZZ	5310-00-934-9746	96906	MS35649-245	NUT, FLAIN, HEXAGON	EA	2
9	21	PAFZZ	5310-00-045-5204	96906	MS15795-904	WASHER, FLAT	EA	3
9	22	XBFZZ		01943	8173	CAP, FILLER OPENING	EA	1
9	23	XBFZZ		08380	S1922	FOUNTAIN, EYE WASH, E	EA	1
9	24	XBFZZ		86107	335-1/2	VALVE ASSY, SHOWER	EA	1

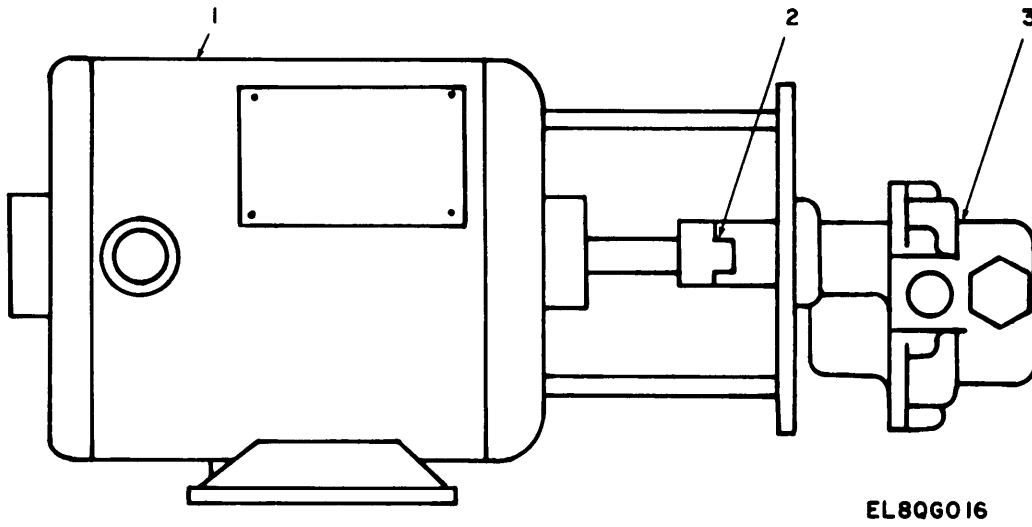


Figure 10. Water pump assembly.

SECTION II (1) ILLUSTRATION		(2)	(3)	TM11-4940-477-24P		(6)	(7)	(8)
(A) FIG NO	(B) ITEM NO	SMR CODE	NATIONAL STOCK NUMBER	(4) FSCM	(5) PART NUMBER	DESCRIPTION	USABLE ON CODE	QTY INC IN UNIT
						GROUP 0201 PUMP ASSY,WATER		
10	1	PAFZZ		16327	7P041MOTOR	MOTOR,WATER PUMP	EA	1
10	2	XBZZ		16327	11640	COUPLING,FLEXIBLE	EA	1
10	3	PAFZZ		16327	1P782	PUMP,ROTORY	EA	1

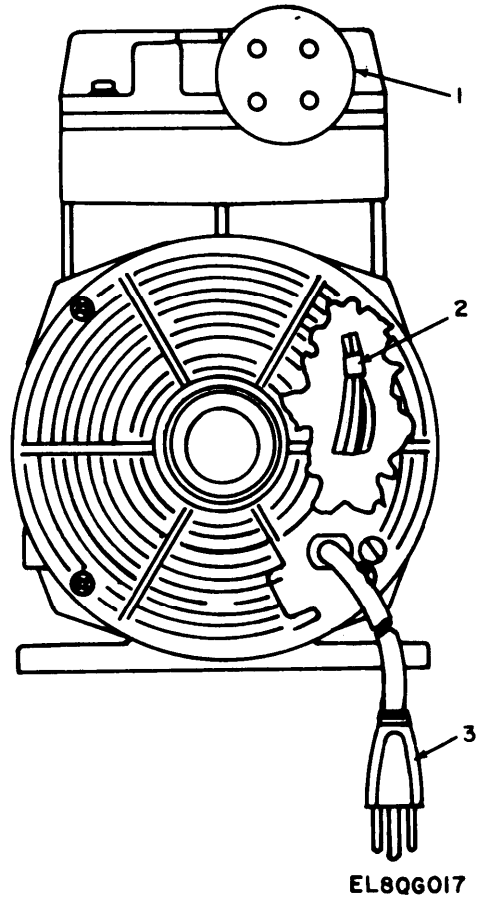


Figure 11. Air compressor unit.



SECTION II (1) ILLUSTRATION		(2)	(3)	TM11-4940-477-24P		(6)	(7)	(8)
(A) FIG NO	(B) ITEM NO	SMR CODE	NATIONAL STOCK NUMBER	(4) FSCM	(5) PART NUMBER	DESCRIPTION	USABLE ON CODE	U/M UNIT
						GROUP 03 COMPRESSOR UNIT, DIA		
11	1	XBFEZ		20024	660587	FILTER ASSY	EA	1
11	2	XBFEZ		20024	634022	TIE WRAP	EA	2
11	3	XBFEZ		20024	607034	CONNECTOR, PLUG, ELEC	EA	10

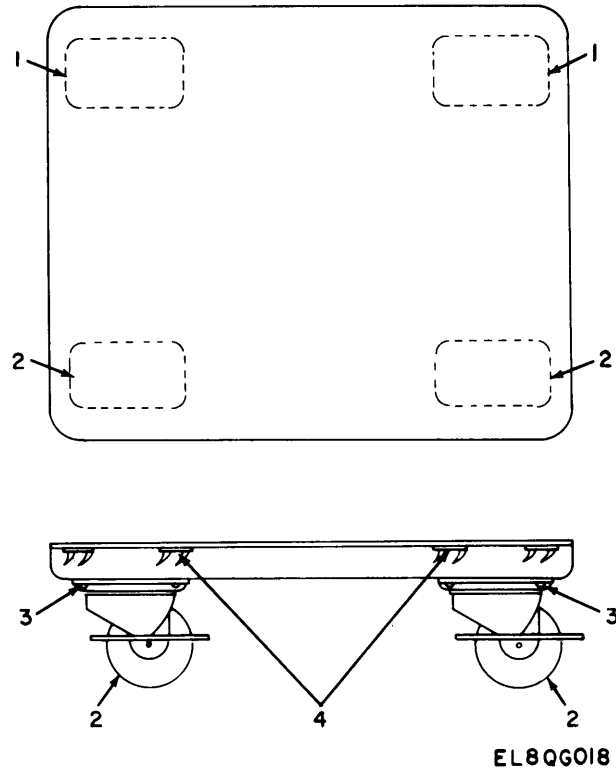


Figure 12. Battery dolly assembly.

SECTION II		TM11-4940-477-24P					
(1)	(2)	(3)	(4)	(5)	(6)	(7)	(8)
ILLUSTRATION		NATIONAL			DESCRIPTION		QTY
(A)	(B)	STOCK	FSCM	PART		USABLE ON CODE	INC
FIG	ITEM	NUMBER		NUMBER			IN
NO	NO						UNIT
GROUP 04 DALLY ASSY, BATTERY							
12	1	PAOZZ	83058	2407T55	CASTER	EA	2
12	2	PAOZZ	83058	9947Y12	CASTER	EA	2
12	3	PAOZZ	96906	MS35233-81	SCREW, MACHINE	EA	16
12	4	PAOZZ	83058	SS59036	T-NUT	EA	16

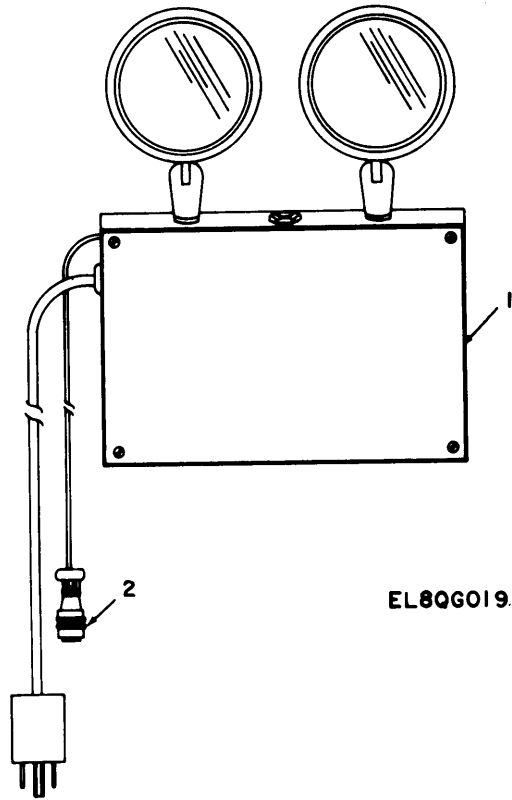


Figure 13. Emergency light assembly

SECTION II (1) ILLUSTRATION		(2)	(3)	TM11-4940-477-24P (4) (5)		(6) DESCRIPTION	(7)	(8) QTY INC IN UNIT
(A) FIG NO	(B) ITEM NO	SMR CODE	NATIONAL STOCK NUMBER	FSCM	PART NUMBER		USABLE ON CODE U/M	
						GROUP 05 LIGHT ASSY, EMERGENCY		
13	1	XBFFF		33525	CC-28H-SR5-CP	LIGHT, EMERGENCY	EA	1
13	2	PAFZZ	5935-00-577-8757	77820	PT06E-8-2S	CONNECTOR, PLUG, ELEC	EA	1

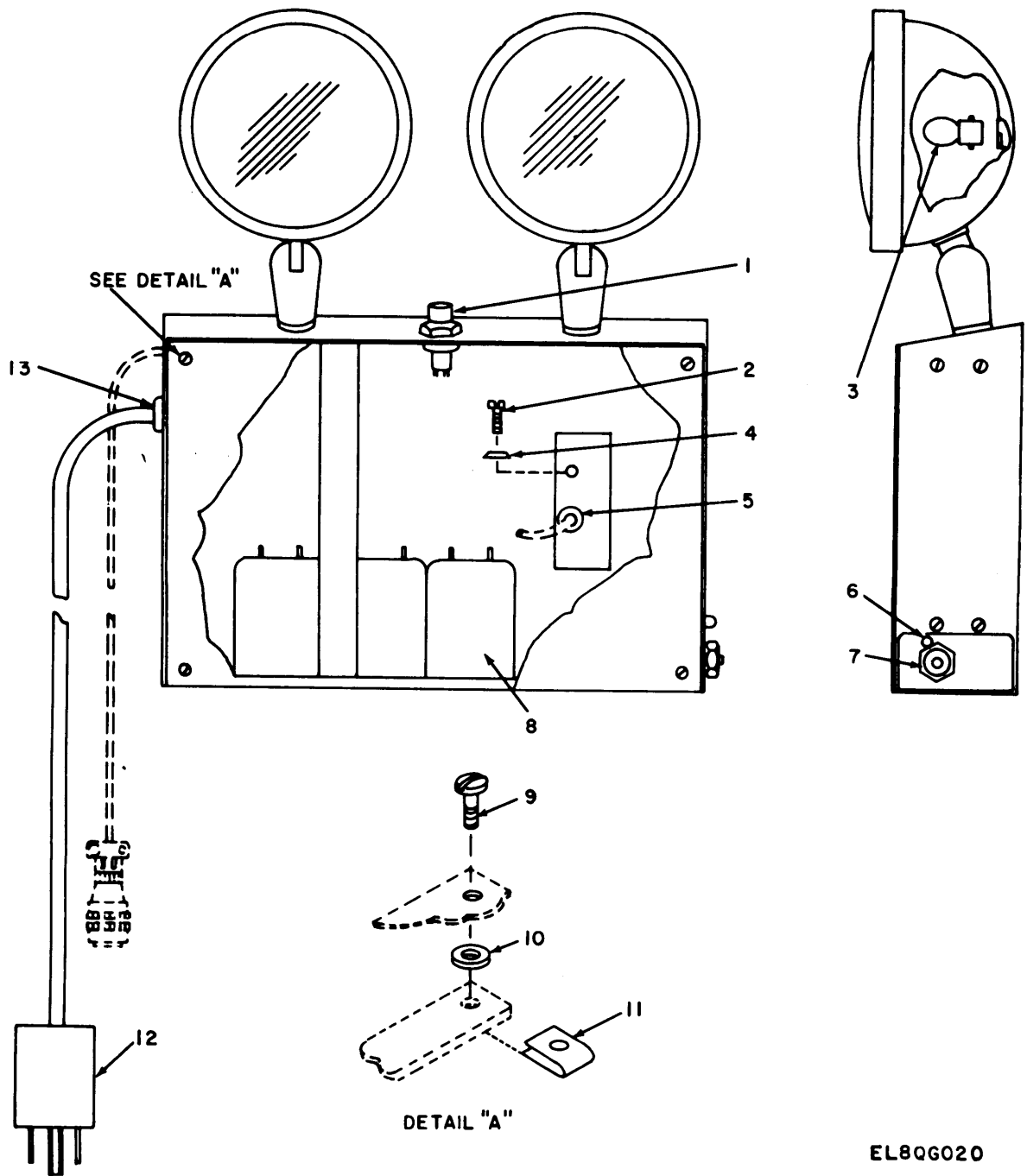
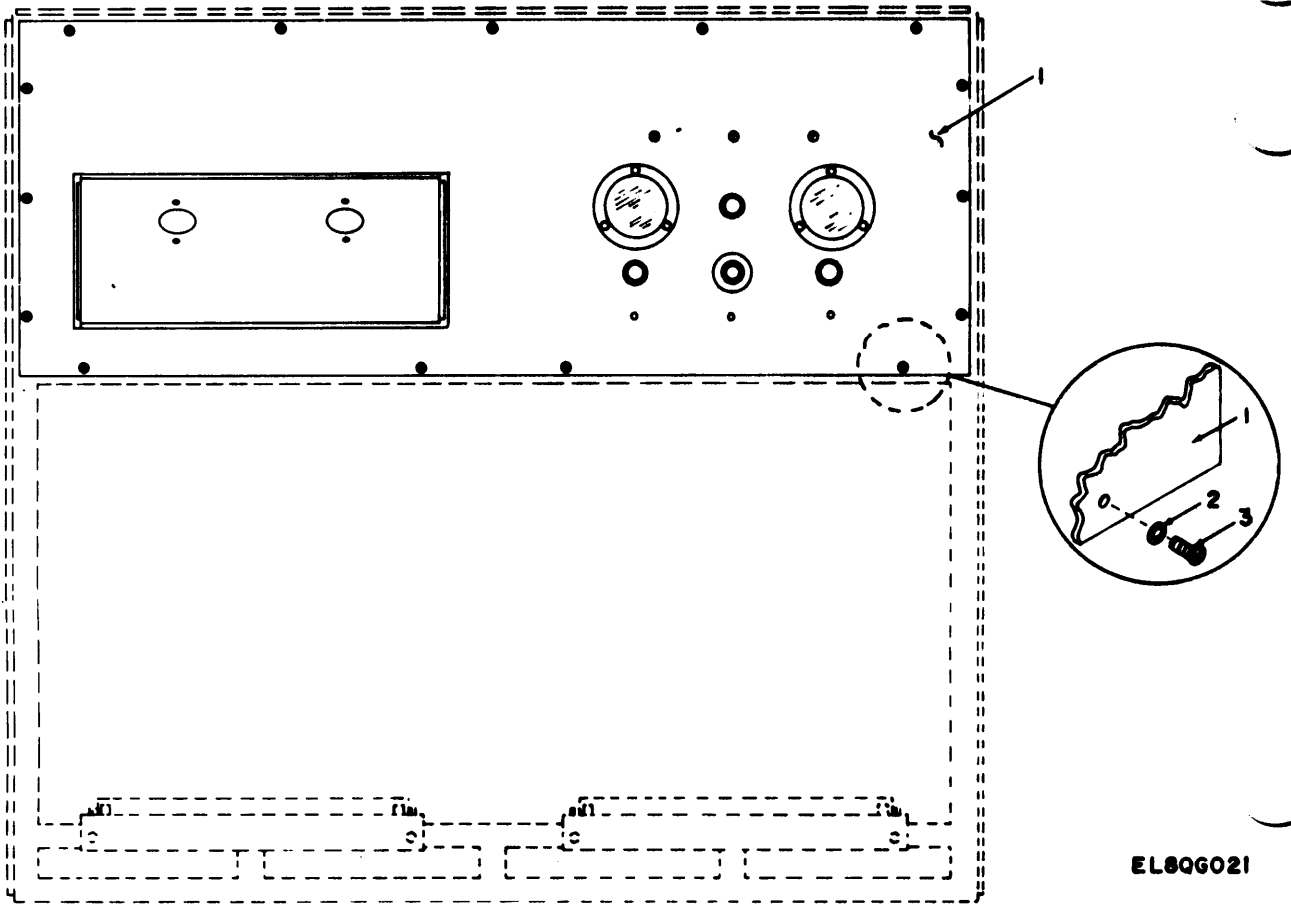


Figure 14. Emergency Light.

SECTION II (1) ILLUSTRATION		(2)	(3)	TM11-4940-477-24P		(6)	(7)	(8)
(A) FIG NO	(B) ITEM NO	SMR CODE	NATIONAL STOCK NUMBER	(4) FSCM	(5) PART NUMBER	DESCRIPTION	USABLE ON CODE U/M	QTY INC IN UNIT
						GROUP 0501 LIGHT, EMERGENCY		
14	1	PAFZZ		33525	610815	SWITCH & CONN ASSY	EA	1
14	2	XBFZZ		33525	540021	SCREW, MACHINE	EA	1
14	3	PAFZZ	6240-01-072-2278	65083	7613	LAMP, INCANDESCENT	EA	2
14	4	XBFZZ		33525	726001	WASHER, CUP	EA	1
14	5	PAFZZ	5975-00-351-6114	39736	92631-2	BUSHING, STRAIN RELI	EA	1
14	6	XBFZZ		33525	725002	CLIP, MOUNTING	EA	1
14	7	XBFZZ		73559	267T-1A-BLX-AG1	SWITCH, PUSH	EA	1
14	8	PAFZZ	6135-01-134-6633	12020	610518	BATTERY ASSEMBLY	EA	1
14	9	PAFZZ	5305-01-146-4531	33525	726016	SCREW, MACHINE	EA	8
14	10	PAFZZ	5310-01-146-1175	33525	719736	WASHER	EA	4
14	11	PAFZZ		33525	527538	NUT, SELF-LOCKING	EA	4
14	12	XBFZZ		33525	518139	CABLE ASSY, POWER	EA	1
14	13	XBFZZ		28520	SR-7K-2	BUSHING, STRAIN RELI	EA	1



EL89G021

Figure 15. Battery charger assembly.



SECTION II (1) ILLUSTRATION		(2)	(3)	TM11-4940-477-24P		(6)	(7)	(8)
(A) FIG NO	(B) ITEM NO	SMR CODE	NATIONAL STOCK NUMBER	(4) FSCM	(5) PART NUMBER	DESCRIPTION	USABLE ON CODE	QTY INC IN UNIT
						GROUP 06 CHARGER ASSY, BATTERY		
15	1	XBFFF		57945	C5079245	PANEL ASSY	EA	1
15	2	PAFZZ	5310-00-167-0801	88044	AN960C10	WASHER, FLAT	EA	32
15	3	PAFZZ	5305-00-059-3659	96906	MS51958-63	SCREW, MACHINE	EA	16

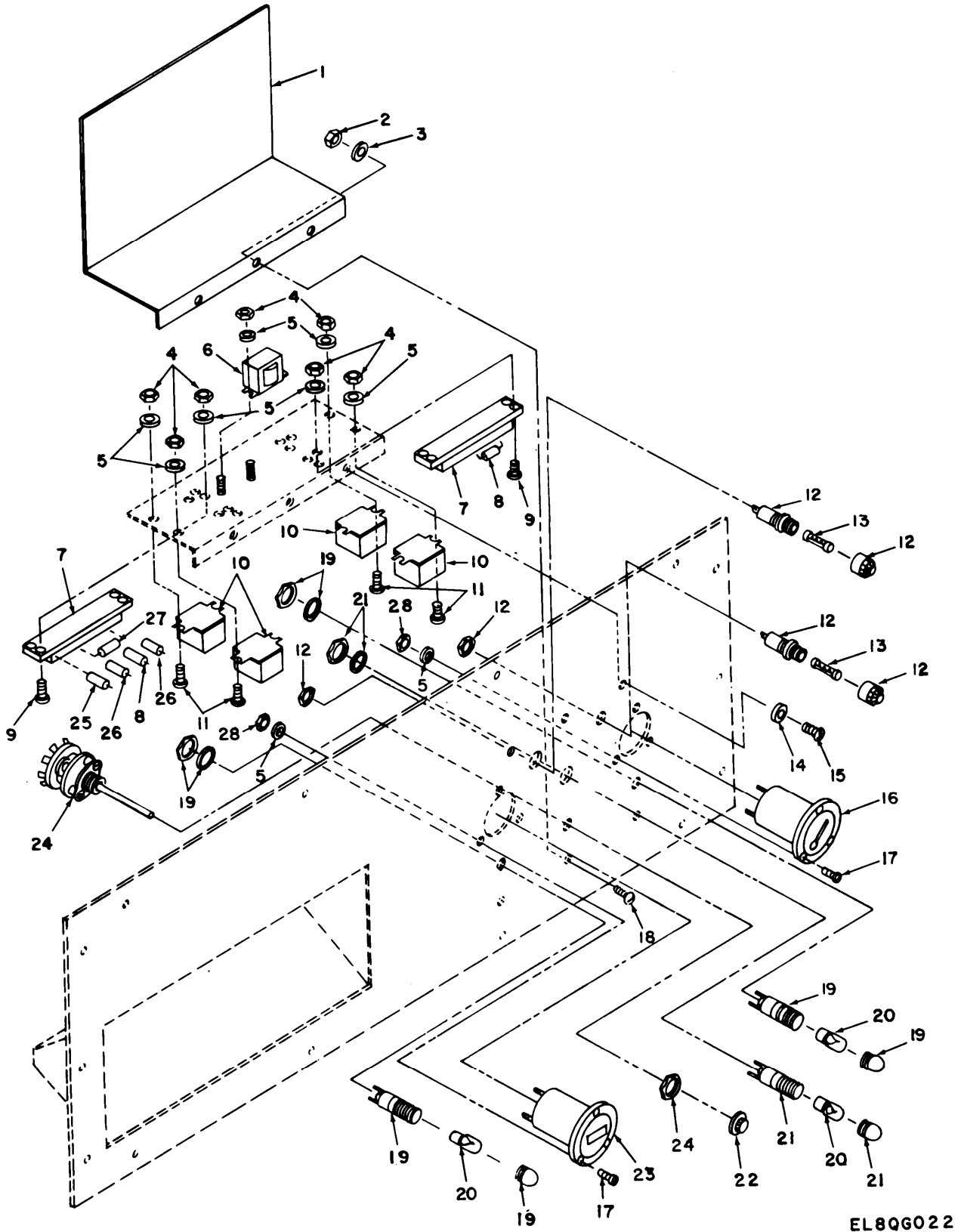
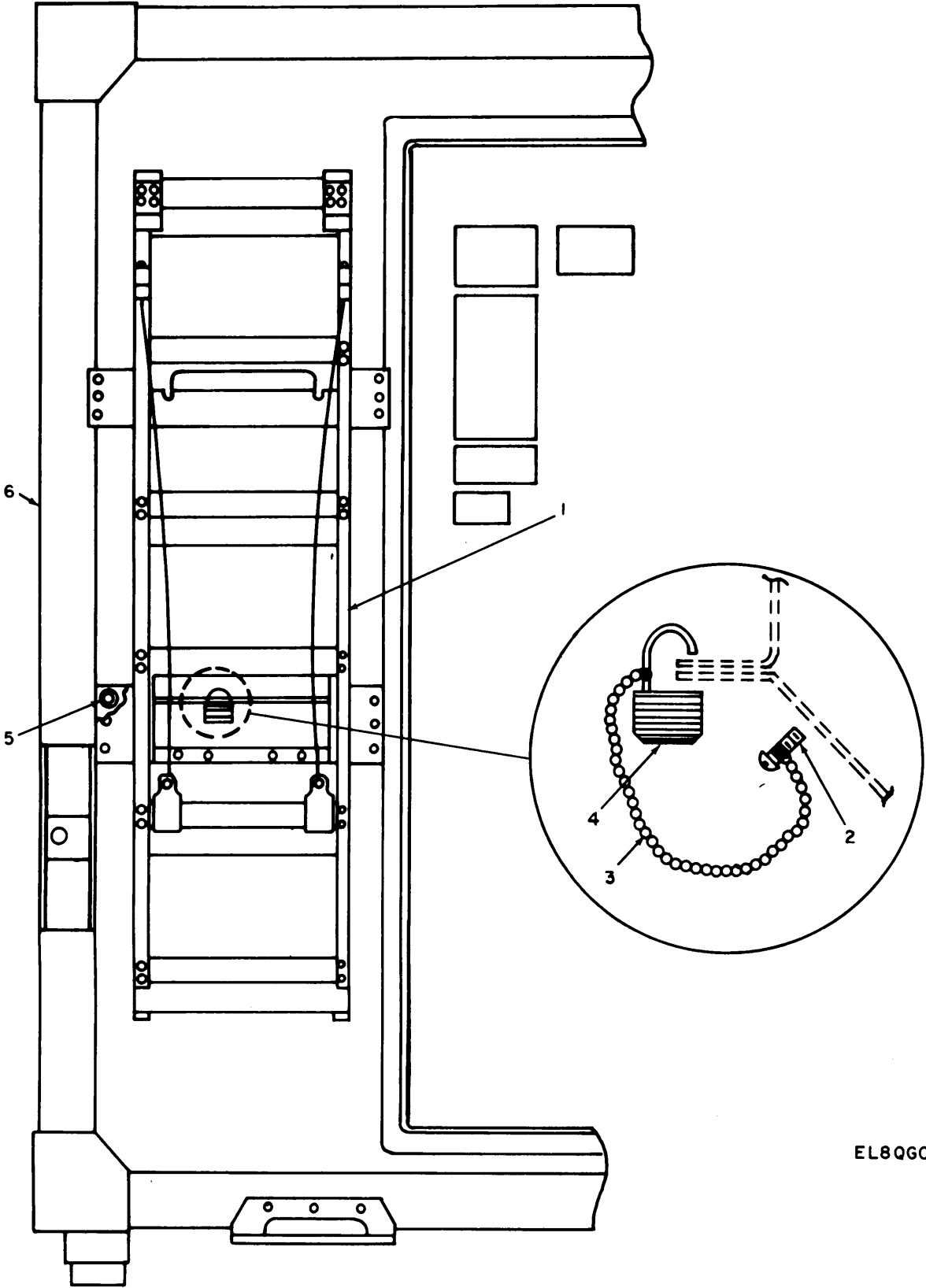


Figure 16. Battery charger panel assembly.

SECTION II (1) ILLUSTRATION		(2)	(3)	TM11-4940-477-24P		(6)	(7)	(8)
(A) FIG NO	(B) ITEM NO	SMR CODE	NATIONAL STOCK NUMBER	(4) FSCM	(5) PART NUMBER	DESCRIPTION	USABLE ON CODE U/M	QTY INC IN UNIT
						GROUP 0601 PANEL ASSEMBLY, BATTERY CHARGER		
16	1	XBFZZ		57945	C5079268	SHIELD	EA	1
16	2	PAFZZ		96906	MS21095C3	NUT, PLAIN, HEXAGON	EA	3
16	3	PAFZZ	5310-00-167-0801	88044	AN960C10	WASHER, FLAT	EA	3
16	4	PAFZZ	5310-00-982-5003	96906	MS21045C06	NUT, SELF-LOCKING, HE	EA	18
16	5	PAFZZ	5310-00-531-9514	88044	AN960-C6	WASHER, FLAT	EA	36
16	6	XBFZZ		57945	KC72503-1	SENSOR	EA	1
16	7	XBFZZ		75382	670GP-12	TERMINAL BOARD	EA	2
16	8	PAFZZ	5905-00-114-5489	81349	RCR20G823JS	RESISTOR, FIXED, COMP	EA	1
16	9	PAFZZ	5305-00-054-6655	96906	MS51957-31	SCREW, MACHINE	EA	8
16	10	PAFZZ		77342	KUP5A55	RELAY, SOLENOID	EA	4
16	11	PAFZZ	5305-00-054-6652	96906	MS51957-28	SCREW, MACHINE	EA	8
16	12	PAFZZ	5920-00-074-4609	75915	344125A	FUSEHOLDER, EXTRACTO	EA	2
16	13	PAFZZ	5920-00-665-0902	7915	3AG	FUSE, CARTRIDGE	EA	2
16	14	PAFZZ	5310-00-685-3744	88044	AN960C8	WASHER, FLAT	EA	3
16	15	PAFZZ	5305-00-054-6670	96906	MS51957-45	SCREW, MACHINE	EA	3
16	16	XBFZZ		15309	MR36W150AC	VOLIMETER	EA	1
16	17	PAFZZ	5305-00-054-6655	96906	MS51957-31	SCREW, MACHINE	EA	6
16	18	PAFZZ	5305-00-059-3659	96906	MS51958-63	SCREW, MACHINE	EA	3
16	19	PAFZZ		72619	950409-0933-341	LAMPHOLDER	EA	2
16	20	PAFZZ	6240-00-223-9100	81349	M15098-10-001	LAMP, GLOW	EA	3
16	21	PAFZZ		72619	950408-0933-341	SOCKET, LAMP	EA	1
16	22	PAFZZ	5355-00-841-3340	71590	P168	KNOB	EA	1
16	23	PAFZZ	6625-00-841-6641	31356	31FHXXRUG	METER, ELECTRICAL FR	EA	1
16	24	PAFZZ	5930-00-086-9980	71590	PA6001	SWITCH, ROTARY	EA	1
16	25	PAFZZ	5905-00-171-1998	81349	RC20GF333J	RESISTOR, FIXED, COMP	EA	2
16	26	PAFZZ	5910-00-823-1143	81349	CP05ALKE473K3	CAPACITOR, FIXED, PAP	EA	2
16	27	PAFZZ	5905-00-279-3497	81349	RC20GF393J	RESISTOR, FIXED, COMP	EA	1
16	28	PAFZZ		96906	MS21095C06	NUT, PLAIN, HEXAGON	EA	6



EL8QG023

Figure 17. Ladder bracket assembly.

SECTION II (1) ILLUSTRATION		TM11-4940-477-24P		(6)		(7)	(8)	
(A) FIG NO	(B) ITEM NO	(2) SMR CODE	(3) NATIONAL STOCK NUMBER	(4) FSCM	(5) PART NUMBER	DESCRIPTION	USABLE ON CODE U/M	QTY INC IN UNIT
GROUP 07 BRACKET ASSEMBLY, LADDER								
17	1	PAFZZ	2540-00-892-6243	80058	MX3391G	LADDER, BOARDING	EA	1
17	2	PAFZZ	5305-00-989-7434	96906	MS35207-263	SCREW, MACHINE	EA	1
17	3	XBZZ		10060	NAS1201B10B12B	FITTING, CHAIN & END	EA	1
17	4	XBZZ		14608	H700	LOCK	EA	1
17	5	PAFZZ		83187	S31B500	NUT, FLAIN, BLIND RIV	EA	17
17	6	XC		80063	S-280C/G	SHELTER	EA	1

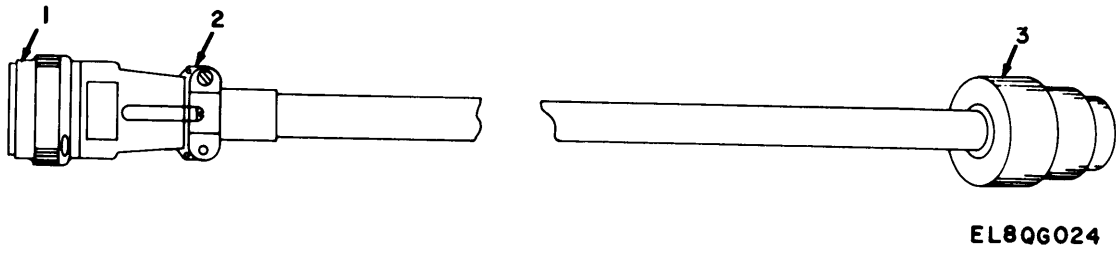
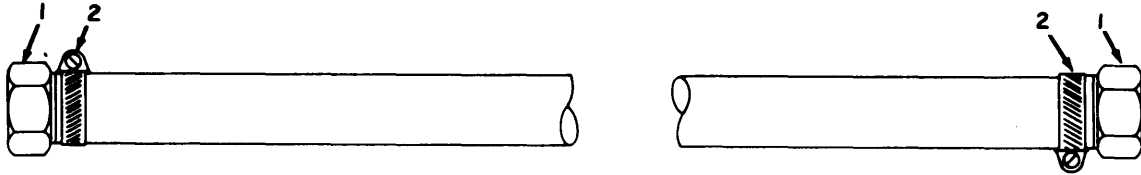


Figure 18. Air conditioning cable assembly.

SECTION II (1) ILLUSTRATION		(2)	(3)	TM11-4940-477-24P		(6)	(7)	(8)
(A) FIG NO	(B) ITEM NO	SMR CODE	NATIONAL STOCK NUMBER	(4) FSCM	(5) PART NUMBER	DESCRIPTION	USABLE ON CODE	QTY INC IN UNIT
						GROUP 08 CABLE ASSY, AIR CONDITIONING		
18	1	PADZZ	5935-00-581-2926	96906	MS3106A18-11S	CONNECTOR, PLUG, ELEC	EA	1
18	2	PADZZ	5935-00-809-0786	96906	MS3057-10A	CLAMP, CABLE, ELECTRI	EA	1
18	3	PADZZ	5935-00-013-9911	80063	SM-C-604422	CONNECTOR, PLUG, ELEC	EA	1



**EL8QG025**

Figure 19. Water hose assembly.



SECTION II (1) ILLUSTRATION		(2)	(3)	TM11-4940-477-24P		(6)	(7)	(8)
(A) FIG NO	(B) ITEM NO	SMR CODE	NATIONAL STOCK NUMBER	(4) FSCM	(5) PART NUMBER	DESCRIPTION	USABLE ON CODE	QTY INC IN UNIT
						GROUP 09 HOSE ASSEMBLY, WATER		
19	1	XBFZZ		30327	KF10-12RY	COUPLING,HOSE	EA	2
19	2	XBFZZ	4730-00-939-6234	08484	QS200M16S	CLAMP,HOSE	EA	2

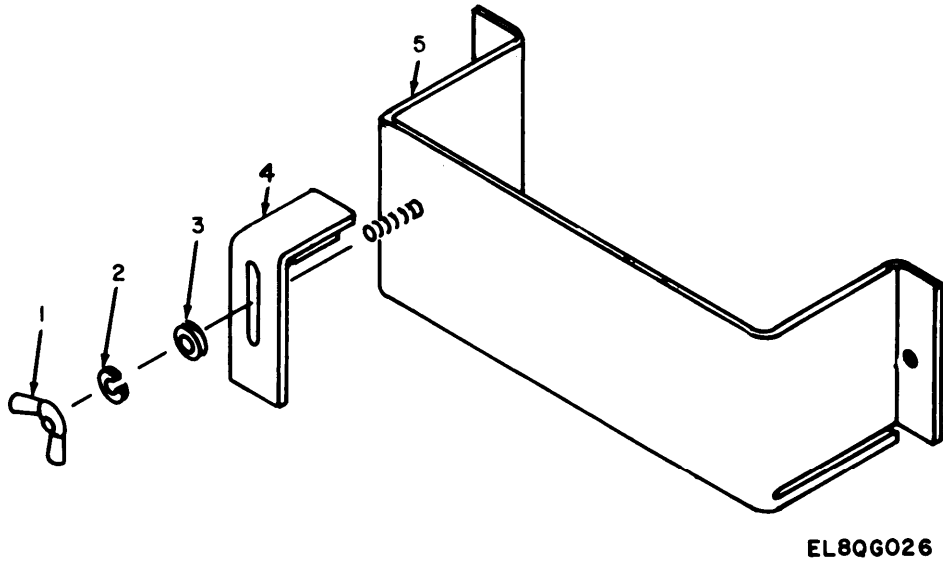
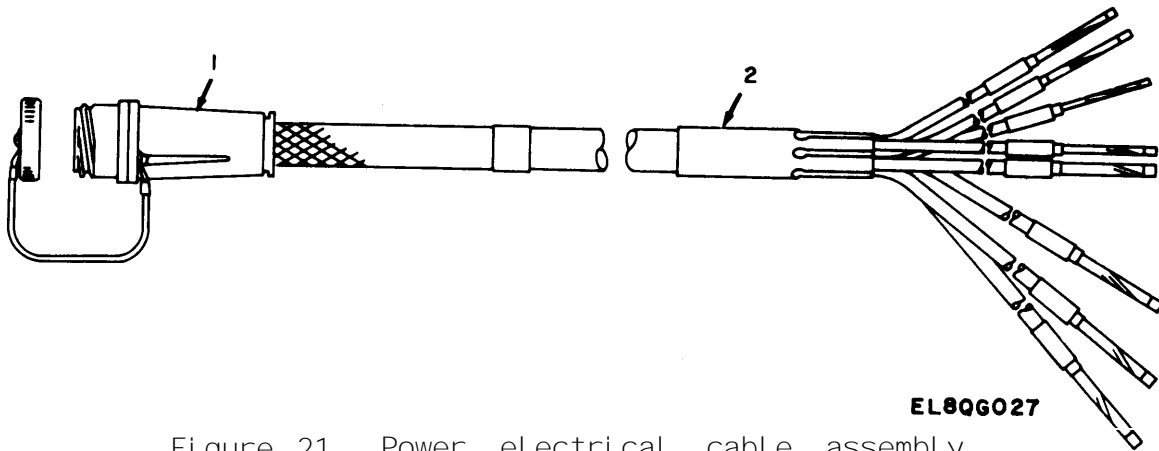


Figure 20. Hammer holder assembly.

SECTION II (1) ILLUSTRATION		(2)	(3)	TM11-4940-477-24P		(6)	(7)	(8)
(A) FIG NO	(B) ITEM NO	SMR CODE	NATIONAL STOCK NUMBER	(4) FSCM	(5) PART NUMBER	DESCRIPTION	USABLE ON CODE U/M	QTY INC IN UNIT
						GROUP 14 HOLDER ASSEMBLY, HAMMER		
20	1	PAFZZ		96906	MS35425-39	NUT, FLAIN, WING	EA	1
20	2	PAFZZ		96906	MS35338-44	WASHER, LOCK	EA	1
20	3	PAFZZ		96906	MS27183-10	WASHER, FLAT	EA	1
20	4	PAFZZ		80063	SC-B-539442	HOLDER ASSY, CLAMP	EA	1
20	5	PAFZZ		80063	SC-C-539444	HOLDER ASSY, WELDED	EA	1



**EL8QG027**

Figure 21. Power electrical cable assembly.

SECTION II (1) ILLUSTRATION		(2)	(3)	TM11-4940-477-24P		(6)	(7)	(8)
(A) FIG NO	(B) ITEM NO	SMR CODE	NATIONAL STOCK NUMBER	(4) FSCM	(5) PART NUMBER	DESCRIPTION	USABLE ON CODE	QTY INC IN UNIT
						GROUP 17 CABLE ASSEMBLY, POWER ELECTRIC		
21	1	PAFZZ	5935-01-092-1037	96906	MS90557C44412S	CONNECTOR, PLUG,ELEC	EA	1
21	2	PAFZZ		80063	SC-D-883964-8	END SEAL	EA	1

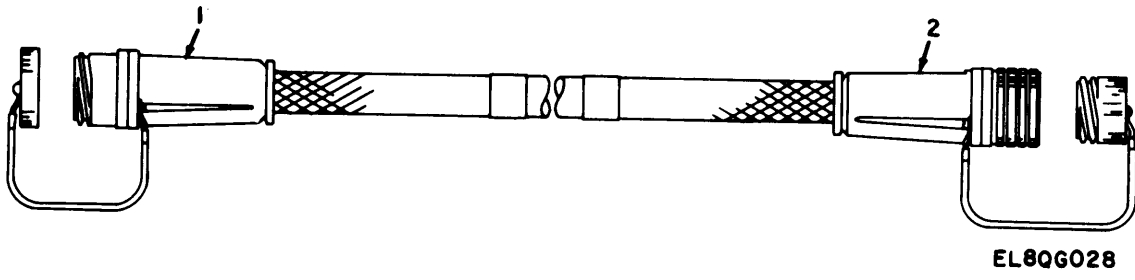
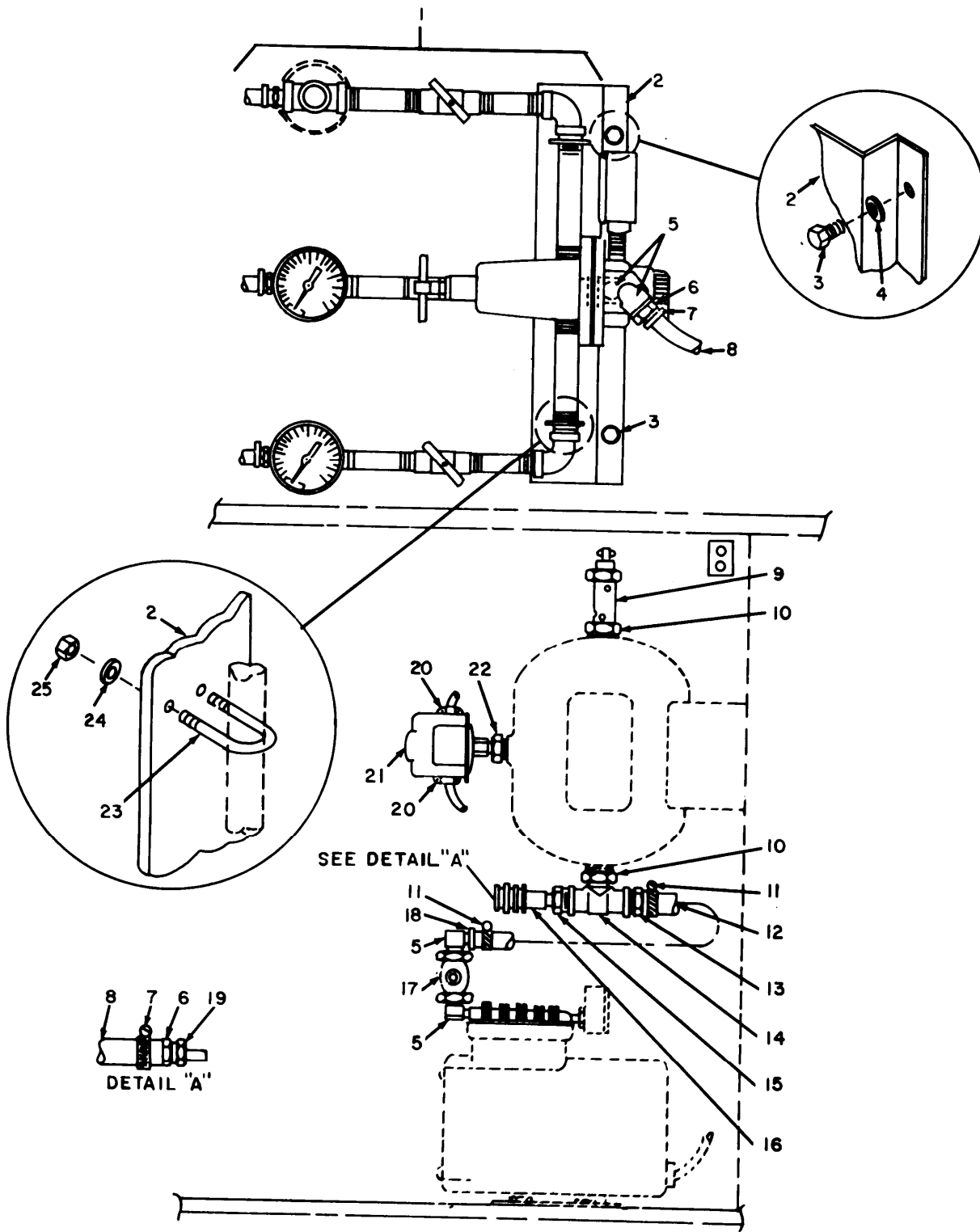


Figure 22. Power electrical cable assembly.

SECTION II (1) ILLUSTRATION		(2)	(3)	TM11-4940-477-24P (4) (5)		(6) DESCRIPTION	(7)	(8) QTY INC IN UNIT
(A) FIG NO	(B) ITEM NO	SMR CODE	NATIONAL STOCK NUMBER	FSCM	PART NUMBER		USABLE ON CODE U/M	
						GROUP 18 CABLE ASSEMBLY, POWER ELECTRIC		
22	1	PAFZZ	5935-01-092-1037	96906	MS90557C44412S	CONNECTOR, PLUG, ELEC	EA	1
22	2	PAFZZ	5935-01-092-1038	96906	MS90556C44412P	CONNECTOR, PLUG, ELEC	EA	2

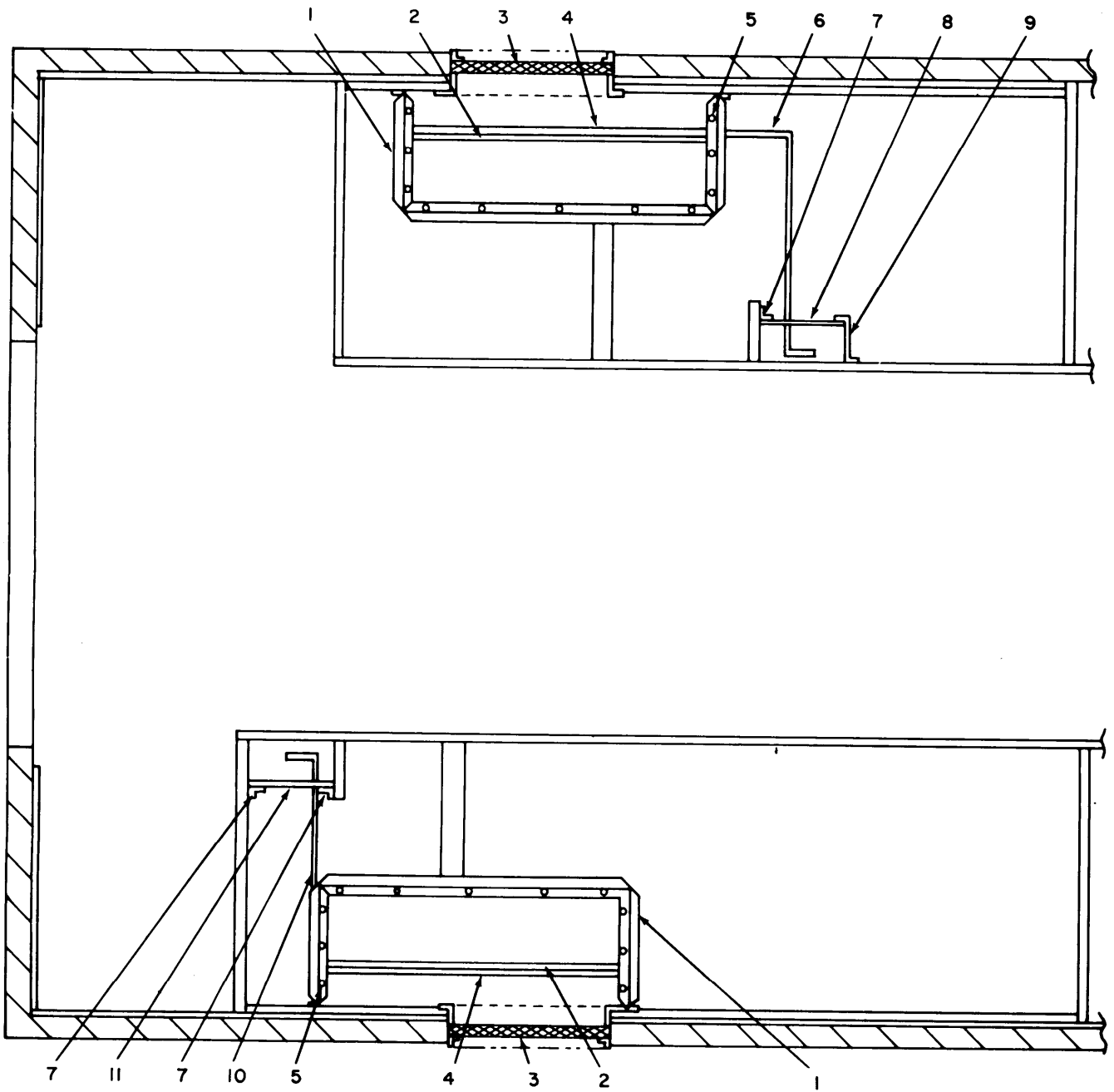


EL8QG029

Figure 23. Battery vent tester installation.



SECTION II (1) ILLUSTRATION		(2)	(3)	TM11-4940-477-24P		(6)	(7)	(8)
(A) FIG NO	(B) ITEM NO	SMR CODE	NATIONAL STOCK NUMBER	(4) FSCM	(5) PART NUMBER	DESCRIPTION	USABLE ON CODE U/M	QTY INC IN UNIT
GROUP 19 TESTER INSTALLATION, VENT BATTERY								
23	1	PAFZZ		09052	19603REVA	TESTER,BATTERY VENT	EA	1
23	2	XBFZZ		57945	C5079316	BRACKET,VENT TESTER	EA	1
23	3	PAFZZ	5306-00-226-4829	96906	MS90728-36	BOLT,MACHINE	EA	2
23	4	PAFZZ	5310-00-167-0814	88044	AN960-C516L	WASHER,FLAT	EA	2
23	5	XBFZZ		11649	B-4-SE	ELBOW,PIPE	EA	1
23	6	PAFZZ		19710	5346K14	NIPPLE,HOSE	EA	2
23	7	PAFZZ	4730-00-877-6298	18876	8486066	CLAMP,HOSE	EA	2
23	8	PAFZZ		57945	C5079315-14	HOSE,1/4 INCH	FT	8
23	9	PAFZZ		19710	9889K33	VALVE,PRESS RELIEF	EA	1
23	10	XBFZZ		11649	B-12-BR8	BUSHING	EA	2
23	11	PAFZZ	4730-00-939-6234	08484	QS200-M16S	CLAMP,HOSE	EA	1
23	12	PAFZZ		57945	C5079315-8	HOSE,1/2 INCH	FT	2
23	13	PAFZZ		19710	5346K25	NIPPLE,HOSE	EA	1
23	14	XBFZZ		11649	B-8-BT	TEE,BRANCH	EA	1
23	15	XBFZZ		11649	B-8-HRN-4	NIPPLE,REDUCING	EA	1
23	16	PAFZZ		14127	H-2B	COUPLING,QUICK DISC	EA	1
23	17	PAFZZ		19710	4773K2	VALVE,CHECK	EA	1
23	18	XBFZZ		19710	5346K22	NIPPLE,HOSE	EA	1
23	19	PAFZZ	4730-00-844-1838	14127	K-2B	COUPLING HALF,QUICK	EA	1
23	20	PAFZZ	5975-00-152-1144	78229	NC301	BOX CONNECTOR,ELECT	EA	2
23	21	PAFZZ	5930-01-153-0103	97619	KC72500	SWITCH,PRESSURE	EA	1
23	22	XBFZZ		11649	B-12-BR4	BUSHING	EA	1
23	23	XBFZZ		57945	C5079314	BOLT,U	EA	2
23	24	PAFZZ	5310-00-167-0812	88044	AN960-C10L	WASHER,FLAT	EA	4
23	25	PAFZZ	5310-00-926-1835	96906	MS21083-C3	NUT,SELF-LOCKING,HE	EA	4



EL8QG030

Figure 24. Air duct installation.

SECTION II (1) ILLUSTRATION		(2)	(3)	TM11-4940-477-24P		(6)	(7)	(8)
(A) FIG NO	(B) ITEM NO	SMR CODE	NATIONAL STOCK NUMBER	(4) FSCM	(5) PART NUMBER	DESCRIPTION	USABLE ON CODE U/M	QTY INC IN UNIT
						GROUP 22 DUCT INSTL, AIR		
24	1	PAFZZ		57945	C5079173	DUCT, VENTILATION	EA	2
24	2	PAFZZ		57945	C5079165	STOP, VENT DAMPER	EA	2
24	3	PAFZZ		57945	C5079150	FILTER, AIR INTAKE	EA	2
24	4	PAFZZ		57945	C5079157	DAMPER ASSEMBLY	EA	2
24	5	PAFZZ		96906	MS35493-50	SCREW, WOOD	EA	56
24	6	XBFZZ		57945	C5079160	ARM, DAMPER CONTROL	EA	1
24	7	XBFZZ		57945	C5079232	BRACKET ASSEMBLY	EA	3
24	8	XBFZZ		57945	C5079242-1	FACEPLATE	EA	1
24	9	XBFZZ		57945	C5079231	BRACKET ASSEMBLY	EA	1
24	10	XBFZZ		57945	C5079236	ARM, DAMPER CONTROL	EA	1
24	11	XBFZZ		57945	C5079242-2	FACEPLATE	EA	1



## SECTION IV

### NATIONAL STOCK NUMBER AND PART NUMBER INDEX

---

SECTION IV NATIONAL STOCK NUMBER AND PART NUMBER INDEX TM11-4940-477-24P  
 NOTE: LATEST NATIONAL STOCK NUMBER AND PART NUMBER ASSIGNMENTS ARE INCLUDED AT END OF INDEX.

STOCK NUMBER	FIGURE NO	ITEM NO	STOCK NUMBER	FIGURE NO	ITEM NO
5935-00-013-9911	18	3	5310-00-531-9515	1	18
5310-00-045-5204	9	21	5805-00-543-0012	1	32
5305-00-054-6652	16	11	5310-00-543-4717	4	17
5305-00-054-6655	16	9	5925-00-572-7323	5	5
5305-00-054-6655	16	17	5935-00-577-8757	13	2
5305-00-054-6656	4	1	5935-00-581-2926	18	1
5305-00-054-6667	4	18	5310-00-582-5965	4	20
5305-00-054-6670	16	15	5925-00-583-7941	5	13
5310-00-056-3394	4	13	5925-00-583-7941	6	8
5305-00-059-3659	1	15	5925-00-597-1542	6	9
5305-00-059-3659	15	3	5930-00-655-1582	5	9
5305-00-059-3659	16	18	5306-00-655-6170	1	41
5305-00-059-3661	2	8	5920-00-665-0902	5	7
5310-00-061-1258	4	14	5920-00-665-0902	16	13
5305-00-071-1324	1	60	5310-00-685-3744	16	14
5305-00-071-2514	1	19	5925-00-710-1663	6	11
5920-00-074-4609	5	6	5925-00-710-1664	5	14
5920-00-074-4609	16	12	5305-00-719-5007	1	49
5925-00-080-2162	6	7	4310-00-765-1877	1	59
5310-00-081-8087	8	1	5305-00-781-5658	1	76
5310-00-082-1404	4	6	5940-00-807-9057	7	2
5310-00-082-1404	8	2	5935-00-809-0786	18	2
5930-00-086-9980	16	24	5310-00-809-8544	8	9
5905-00-114-5489	16	8	5935-00-815-1541	2	14
5110-00-115-5049	1	74	5925-00-818-4811	5	11
5340-00-134-3482	1	89	5925-00-818-4811	6	10
5310-00-144-8453	7	11	5910-00-823-1143	16	26
5310-00-144-8453	8	6	5355-00-841-3340	16	22
5306-00-151-1426	4	3	6625-00-841-6641	16	23
5975-00-152-1075	1	6	4730-00-844-1838	23	19
5975-00-152-1144	23	20	5310-00-853-9335	4	21
6240-00-152-2996	7	6	4730-00-877-6298	23	7
7520-00-159-4863	1	16	2540-00-892-6243	17	1
6230-00-162-1227	1	27	5310-00-918-6921	4	15
7520-00-162-6178	1	14	6210-00-921-6682	7	15
5310-00-167-0801	1	90	5310-00-926-1835	1	91
5310-00-167-0801	15	2	5310-00-926-1835	23	25
5310-00-167-0801	16	3	5310-00-934-9746	9	20
5310-00-167-0803	1	37	5310-00-934-9763	4	5
5310-00-167-0812	23	24	4730-00-939-6234	19	2
5310-00-167-0814	23	4	4730-00-939-6234	23	11
5310-00-167-0843	1	5	5910-00-949-4916	4	7
5905-00-171-1998	16	25	5310-00-982-5003	16	4
6210-00-173-2398	2	20	5310-00-984-3806	1	50
5325-00-174-5317	8	3	5305-00-984-4988	8	5
6250-00-175-2559	7	5	5305-00-984-6193	8	10
4520-00-177-6198	1	51	5305-00-989-7434	17	2
7920-00-178-8315	1	26	6250-00-995-9074	8	4
5310-00-184-8971	4	11	5935-01-012-3080	2	4
5805-00-191-1543	1	33	5975-01-033-9750	8	12
6250-00-194-4794	7	8	5310-01-034-2835	4	10
5340-00-205-3486	7	1	5930-01-051-5576	2	15
6240-00-223-9100	16	20	6130-01-055-1574	1	8
5975-00-224-5260	1	80	6240-01-072-2278	14	3
5306-00-226-4825	1	39	5855-01-072-9865	1	77
5306-00-226-4829	23	3	5935-01-082-5372	4	9
5306-00-226-4831	1	38	5935-01-092-1037	21	1
			5935-01-092-1037	22	1
			5935-01-092-1038	22	2
			5935-01-103-6064	4	4
			5120-01-110-9193	1	45
			6135-01-134-6633	14	8
			5340-01-145-4031	1	75
			5310-01-146-1175	14	10
			5305-01-146-4531	14	9
			6250-01-150-5369	7	10
			5930-01-153-0103	9	17
			5930-01-153-0103	23	21
			5915-01-153-2417	7	7
			5340-01-0165-3592	1	46
4140-00-236-0730	2	11			
6250-00-270-6799	7	12			
6250-00-275-1935	7	9			
5905-00-279-3497	16	27			
4210-00-288-6849	1	30			
6250-00-299-6562	2	16			
5975-00-351-6114	14	5			
6645-00-410-2395	1	70			
5940-00-433-7481	5	12			
6250-00-449-7859	7	13			
6250-00-449-7859	8	7			
6210-00-451-8350	8	11			
5310-00-531-9514	16	5			

FSCM	PART NUMBER	FIGURE NO	ITEM NO	FSCM	PART NUMBER	FIGURE NO	ITEM NO
81348	AAC00295CL2SIZE3	1	54	88044	AN4-6A	4	3
07707	AD64AH	1	86	88044	AN960-C10L	23	24
80058	AN/USM-415	1	25	88044	AN960-C516L	23	4
80058	AN/USM-432	1	8	88044	AN960-C6	16	5

FSCM	PART NUMBER	FIGURE NO	ITEM NO	FSCM	PART NUMBER	FIGURE NO	ITEM NO
88044	AN960-1416L	1	5	57945	C5079305-1	6	2
88044	AN960C10	1	90	57945	C5079305-2	6	3
88044	AN960C10	15	2	57945	C5079314	23	23
88044	AN960C10	16	3	57945	C5079315	1	71
88044	AN960C416	1	18	57945	C5079315-14	23	8
88044	AN960C516	1	37	57945	C5079315-8	23	12
88044	AN960C8	16	14	57945	C5079316	23	2
80058	A2260-26	1	2	57945	C5079320	1	7
11649	B-12-BR4	23	22	57945	C5079321	1	79
11649	B-12-BR8	23	10	56365	C62B2W/EA-11ARM	3	5
11649	B-4-SE	23	5	20307	ES-D-212731	1	23
11649	B-8-BT	23	14	91595	FS2NA	7	8
11649	B-8-HRN-4	23	15	65083	F20T12/CW	7	6
21518	BB3-2-06-F-138	1	4	80058	H-B-71	1	81
32159	C-85355-B	7	7	14127	H-2B	23	16
33525	CC-2BH-SR5-CP	13	1	14608	H700	17	4
81349	CP05A1KE473K3	16	26	14127	K-2B	23	19
41326	CR2943AA101B-TRIP	3	2	97619	KC20004-6	1	12
73804	CS-1	1	28	97619	KC29000	1	65
95987	CSG-20	3	3	97619	KC72500	9	17
57945	C5079125-16	1	61	97619	KC72500	23	21
57945	C5079126	1	72	57945	KC72503-1	16	6
57945	C5079127	2	21	30327	KF10-12RY	19	1
57945	C5079128-1	3	1	14655	KKNP66P105QP1	2	10
57945	C5079129	2	25	77342	KUP5A55	16	10
57945	C5079130	2	13	80058	MODF9000H-3	1	69
57945	C5079150	24	3	15309	MR36W150AC	16	16
57945	C5079157	24	4	96906	MS15794-914	4	12
57945	C5079160	24	6	96906	MS15795-904	9	21
57945	C5079161	1	52	96906	MS21044N06	8	1
57945	C5079165	24	2	96906	MS21045C06	16	4
57945	C5079167	1	1	96906	MS21083-C3	1	91
57945	C5079167-32	9	7	96906	MS21083-C3	23	25
57945	C5079167-50	9	14	96906	MS21095C06	16	28
57945	C5079171-1	1	87	96906	MS21095C3	16	2
57945	C5079173	24	1	96906	MS24693S102	1	76
57945	C5079176-2	1	9	96906	MS24693S124	1	34
57945	C5079180	1	24	96906	MS27183-10	20	3
57945	C5079190	1	35	96906	MS27183-6	4	6
80063	C5079202	7	4	96906	MS27183-6	8	2
57945	C5079203	2	22	96906	MS27183-7	8	9
57945	C5079211	4	19	96906	MS3057-10A	18	2
57945	C5079216	3	7	96906	MS3106A18-11S	18	1
57945	C5079217	1	36	96906	MS3116E8-4S	2	14
57945	C5079221	1	40	96906	MS35059-23	5	9
57945	C5079231	24	9	96906	MS35206-228	8	5
57945	C5079232	24	7	96906	MS35206-245	8	10
57945	C5079235	9	11	96906	MS35207-263	17	2
57945	C5079236	24	10	96906	MS35233-81	12	3
57945	C5079242-1	24	8	96906	MS35307-338	1	41
57945	C5079242-2	24	11	96906	MS35338-103	4	11
57945	C5079245	15	1	96906	MS35338-44	4	20
57945	C5079246LH	9	2	96906	MS35338-44	20	2
57945	C5079246RH	9	13	96906	MS35425-28	4	17
57945	C5079248	1	56	96906	MS35425-39	20	1
57945	C5079255	1	10	96906	MS35489-4	8	3
57945	C5079258	3	6	96906	MS35493-50	24	5
57945	C5079259	3	4	96906	MS35649-2385	4	13
57945	C5079268	16	1	96906	MS35649-245	9	20
57945	C5079270	2	3	96906	MS35649-265	4	5
57945	C5079271	2	1	96906	MS35691-13	4	21
57945	C5079282	1	55	96906	MS35691-20	4	15
57945	C5079283	1	57	96906	MS45904-76	4	14
57945	C5079290	1	83	96906	MS51862-34C	1	3
57945	C5079291	1	68	96906	MS51862-40C	1	22
57945	C5079292	1	66	96906	MS51862-42C	1	42
57945	C5079293-1	9	19	96906	MS51922-19	4	10
57945	C5079294	9	8	96906	MS51922-9	1	50
57945	C5079297	1	21	96906	MS51957-28	16	11
57945	C5079300	1	48	96906	MS51957-31	16	9
57945	C5079301-1	1	62	96906	MS51957-31	16	17
57945	C5079301-2	1	53	96906	MS51957-32	4	1
57945	C5079301-3	1	63	96906	MS51957-42	4	18
57945	C5079301-4	1	58	96906	MS51957-45	16	15
57945	C5079302	1	17	96906	MS51958-63	1	15
57945	C5079303	1	20	96906	MS51958-63	15	3
57945	C5079304	5	1	96906	MS51958-63	16	18
57945	C5079304-1	5	2	96906	MS51958-65	2	8
57945	C5079304-2	5	3	96906	MS51959-83	1	49
57945	C5079305	6	1	96906	MS51960-67	1	60

FSCM	PART NUMBER	FIGURE NO	ITEM NO	FSCM	PART NUMBER	FIGURE NO	ITEM NO
96906	MS90556C44412P	22	2	80063	SC-D-883964GR9-2	1	64
96906	MS90557C44412S	21	1	87327	SE570	9	3
96906	MS90557C44412S	22	1	80063	SM-C-604422	18	3
96906	MS90558C44412P	4	4	28520	SR-7K-2	14	13
96906	MS90724-7	7	11	83058	SS59036	12	4
96906	MS90724-7	8	6	08380	S1922	9	23
96906	MS90728-17	1	19	03481	S25-380	2	6
96906	MS90728-32	1	39	03481	S31-425	2	7
96906	MS90728-36	23	3	83187	S31B500	17	5
96906	MS90728-38	1	38	80058	TA312/PT	1	32
80058	MX3391G	17	1	80058	TL-337/U	1	27
81349	M15098-10-001	16	20	74193	TX1-P15-U00-WH2	5	8
81349	M23071/7-001	2	11	81348	W-F-00421	1	29
21873	M3780	4	2	81348	WC375/03-002	6	7
10060	NAS1201B10B12B	17	3	76385	ZX4237	5	4
10060	NAS1201C6A16A	9	9	76385	ZX4237	6	4
78229	NC301	23	20	94322	09502210	1	26
14655	NFF-315-D	4	8	16327	1P782	10	3
93790	NFT-193	4	7	16327	11640	10	2
71590	PA6001	16	24	82796	11900514	1	30
56365	PK15GTA	5	12	65083	1201	2	19
14280	PK18GTA	6	9	3T553	17D56-1/4	9	18
77820	PT00E-8-2P	2	5	3T553	18050-1 1/4X6IN	9	5
77820	PT06E-8-2S	13	2	09052	19603REVA	23	1
71590	P168	16	22	3T553	20D150	9	4
08484	QS200-M16S	23	11	3T553	23D23	9	1
08484	QS200M16S	19	2	83058	2407T55	12	1
56365	QOC12S	5	5	24455	25T8DC	8	8
56365	QOC20WS	6	5				
56365	QO115	5	11	73559	267T-1A-BLX-AG1	14	7
56365	QO115	6	10	75915	3AG	5	7
56365	QO120	5	13	75915	3AG	16	13
56365	QO120	6	8	14655	30434-31	2	9
56365	QO360-1021	6	6	31356	31FHXXRUG	16	23
56365	QO412-24	5	14	86107	335-1/2	9	24
14280	QO420-30W	6	11	19557	340-62	1	84
56365	Q13100-1021	5	10	00779	34312	7	2
81349	RCR20G823JS	16	8	75915	344125A	5	6
81349	RC20GF333J	16	25	75915	344125A	16	12
81349	RC20GF393J	16	27	3T553	3574-2	9	6
95146	RS-51NO	2	15	79500	4109	2	16
65083	R2A	2	18	72423	4173-200	9	12
80063	S-280C/G	17	6	71744	4365-034	8	4
80063	SC-B-539435	1	44	19710	4773K2	23	17
80063	SC-B-539439	1	75	86768	481-1/4B2-2	9	16
80063	SC-B-539442	20	4	80063	SC-B-535459	4	16
80063	SC-B-539466	7	15	33525	518139	14	12
80063	SC-B-539492	1	78	74545	5262	2	4
80063	SC-B-539564-2	2	23	75582	5262	4	9
80063	SC-B-539564-2	7	1	33525	527538	14	11
80063	SC-B-539597	1	89	19710	5346K14	23	6
80063	SC-B-539609-2	7	12	19710	5346K22	23	18
80063	SC-B-539610-2	7	9	19710	5346K25	23	13
80063	SC-B-681073-2	2	17	33525	540021	14	2
80063	SC-B-693708	1	82	20024	607034	11	3
80063	SC-C-539421	1	77	12020	610518	14	8
80063	SC-C-539441	1	46	33525	610815	14	1
80063	SC-C-539444	20	5	20024	634022	11	2
80063	SC-C-539451	1	74	20024	660587	11	1
80063	SC-C-539463	1	13	75382	670GP-12	16	7
80063	SC-C-539503	1	14	16327	7P041	9	15
80063	SC-C-539560GR2	7	14	16327	7P041MOTOR	10	1
80063	SC-C-539561GR2	7	10	71183	71430FR	2	12
80063	SC-C-539562-1	2	24	33525	719736	14	10
80063	SC-C-539849	1	88	77820	72130-FR	2	2
80063	SC-C-547186	8	11	33525	725002	14	6
80063	SC-C-626846	1	47	3T553	726-3/8	9	10
80063	SC-C-632376	1	43	33525	726001	14	4
80063	SC-C-681034	8	12	33525	726016	14	9
80063	SC-C-681035	7	13	65083	7613	14	3
80063	SC-C-681035	8	7	41326	78X491	7	5
80063	SC-D-539454	1	16	93201	78X736	7	16
80063	SC-D-539460	1	73	20024	807CM60	1	59
80063	SC-D-539483	1	11	01943	8173	9	22
80063	SC-D-539505	1	45	18876	8486066	23	7
80063	SC-D-539506	1	33	33525	872524	1	31
				85599	89G457	7	3
80063	SC-D-681033	2	20	57566	8910	1	70
80063	SC-D-883963GR9-3	1	67	51033	9246	1	80
80063	SC-D-883964-8	21	2	39736	92631-2	14	5



FSCM	PART NUMBER	FIGURE NO	ITEM NO	FSCM	PART NUMBER	FIGURE NO	ITEM NO
02470	95-32	1	6	19710	9889K33	23	9
72619	950408-0933-341	16	21	83058	9947Y12	12	2
72619	950409-0933-341	16	19				

## LATEST NATIONAL STOCK NUMBER ASSIGNMENTS

## LATEST PART NUMBER ASSIGNMENTS

STOCK NUMBER	FIGURE NO.	ITEM NO.	FSCM	PART NUMBER	FIGURE NO.	ITEM NO.
5940-00-269-2219	1	85	17032	P15D	1	51
			83330	257BLACK	1	85



RECOMMENDED CHANGES TO EQUIPMENT TECHNICAL PUBLICATIONS

SOMETHING WRONG WITH THIS PUBLICATION?



THEN... JOT DOWN THE DOPE ABOUT IT ON THIS FORM, CAREFULLY TEAR IT OUT, FOLD IT AND DROP IT IN THE MAIL!

FROM: (PRINT YOUR UNIT'S COMPLETE ADDRESS)  
 Commander  
 Stateside Army Depot  
 ATTN: AMSTA-US  
 Stateside, N.J. 07703

DATE SENT  
 10 July 1975

PUBLICATION NUMBER TM 11-5840-340-20P	PUBLICATION DATE 23 Jan 78	PUBLICATION TITLE Radar Set AN/PRC-76
--	-------------------------------	--

BE EXACT... PIN-POINT WHERE IT IS				IN THIS SPACE TELL WHAT IS WRONG AND WHAT SHOULD BE DONE ABOUT IT:
PAGE NO	PARA-GRAPH	FIGURE NO	TABLE NO	
33				For item 2, change the NSN to read: 5835-00-134-9186. Reason: Accuracy.
44		19		Identify the cover on the junction box (item no. 5). Reason: It is a separate item and is not called out on figure 19.
45				Add the cover of the junction box as an item in the listing for figure 19. Reason: Same as above

SAMPLE

DATED LINE

TEAR ALONG

PRINTED NAME, GRADE OR TITLE, AND TELEPHONE NUMBER  
 SSG I. M. DeSpirit of 999-1776

SIGN HERE

FILL IN YOUR  
UNIT'S ADDRESS

FOLD BACK

DEPARTMENT OF THE ARMY

\_\_\_\_\_  
\_\_\_\_\_

POSTAGE AND FEES PAID  
DEPARTMENT OF THE ARMY  
DOD 314



OFFICIAL BUSINESS  
PENALTY FOR PRIVATE USE \$300

**SAMPLE**

Commander  
US Army Communications-Electronics Command  
and Fort Monmouth  
ATTN: DRSEL-ME-MP  
Fort Monmouth, New Jersey 07703

TEAR ALONG PERFORATED LINE

RECOMMENDED CHANGES TO EQUIPMENT TECHNICAL PUBLICATIONS



THEN...JOT DOWN THE DOPE ABOUT IT ON THIS FORM. CAREFULLY TEAR IT OUT, FOLD IT AND DROP IT IN THE MAIL.

SOMETHING WRONG WITH THIS PUBLICATION?

FROM: (PRINT YOUR UNIT'S COMPLETE ADDRESS )

DATE SENT

PUBLICATION NUMBER

TM 11-4940-477-24P

PUBLICATION DATE

14 May 1984

PUBLICATION TITLE

Shop Equipment, Battery Servicing Shelter Mounted, AN/TSM-133

BE EXACT PIN-POINT WHERE IT IS

PAGE NO.	PARA-GRAPH	FIGURE NO.	TABLE NO.

IN THIS SPACE TELL WHAT IS WRONG AND WHAT SHOULD BE DONE ABOUT IT:

TEAR ALONG PERFORATED LINE

PRINTED NAME GRADE OR TITLE AND TELEPHONE NUMBER

SIGN HERE

FILL IN YOUR  
UNIT'S ADDRESS

FOLD BACK

DEPARTMENT OF THE ARMY

---

---

OFFICIAL BUSINESS  
PENALTY FOR PRIVATE USE \$300

POSTAGE AND FEES PAID  
DEPARTMENT OF THE ARMY  
DOD 314



TEAR ALONG PERFORATED LINE

Commander  
US Army Communications-Electronics Command  
and Fort Monmouth  
ATTN: DRSEL-ME-MP  
Fort Monmouth, New Jersey 07703

RECOMMENDED CHANGES TO EQUIPMENT TECHNICAL PUBLICATIONS



THEN...JOT DOWN THE DOPE ABOUT IT ON THIS FORM. CAREFULLY TEAR IT OUT, FOLD IT AND DROP IT IN THE MAIL.

**SOMETHING WRONG WITH THIS PUBLICATION?**

FROM: (PRINT YOUR UNIT'S COMPLETE ADDRESS )

DATE SENT

PUBLICATION NUMBER

TM 11-4940-477-24P

PUBLICATION DATE

14 May 1984

PUBLICATION TITLE

Shop Equipment, Battery Servicing Shelter Mounted, AN/TSM-133

BE EXACT PIN-POINT WHERE IT IS

PAGE NO.

PARA-GRAPH

FIGURE NO.

TABLE NO.

IN THIS SPACE TELL WHAT IS WRONG AND WHAT SHOULD BE DONE ABOUT IT:

TEAR ALONG PERFORATED LINE

PRINTED NAME GRADE OR TITLE AND TELEPHONE NUMBER

SIGN HERE

FILL IN YOUR  
UNIT'S ADDRESS

FOLD BACK

DEPARTMENT OF THE ARMY

\_\_\_\_\_  
\_\_\_\_\_

OFFICIAL BUSINESS  
PENALTY FOR PRIVATE USE \$300

POSTAGE AND FEES PAID  
DEPARTMENT OF THE ARMY  
DOD 314



Commander  
US Army Communications-Electronics Command  
and Fort Monmouth  
ATTN: DRSEL-ME-MP  
Fort Monmouth, New Jersey 07703

TEA

PERFORATED LINE



By Order of the Secretary of the Army:

**JOHN A. WICKHAM JR.**  
*General, United States Army*  
*Chief of Staff*

Official:

**ROBERT M. JOYCE**  
*Major General, United States Army*  
*The Adjutant General*

DI STRI BUTI ON:

To be distributed in accordance with DA Form 12-36A requirements  
for Nickel Cadmium Batteries.

☆U.S. GOVERNMENT PRINTING OFFICE: 1984 705 046 4092





055633